

UNIQUE



The Unique Guide to Education Furniture



Primary

Each child is a social, creative, intelligent individual and they demand caring and creative environments focusing on the communal, emotional, physical and intellectual development of each individual.



Secondary

Today's pupils are born to a design conscious society. This awareness runs from product through to environment and everything there in. Secondary school equates to six hours a day for six to seven years, therefore design and ergonomics are just as important here as in any other workplace.



Academy

Academies have to ensure that the school will be at the heart of its community, collaborating and sharing facilities and expertise. Academies benefit from greater freedom to innovate and raise standards. This mantra is reflected in the internal and external landscapes that they create.



College

The collaborative nature of a college structure means that there are fewer administrative boundaries between disciplines and working relationships between diverse areas of research have been strengthened.



University

One of college wide objectives is to develop social responsibility in our students and to equip them to contribute to the future wellbeing of society. As citizens in the community and as members of the future workforce our students will become influential in matters of environmental protection and sustainability.



Library

The Libraries of 2013 are far more than book swap arenas. Today's welcoming environments are centred on the local community, a place of ideas and of personal development embracing the digital advancements and being open and equal to all.

Welcome to our guide on

Education and learning furniture

We are a well-established furniture designer, manufacturer and independent supplier to the Education Sector. This guide aims to demonstrate our wide range of iconic brands that we are proud to supply.

“One order, one contact,
one invoice...”

Unique is...

- Innovation from knowledge
- Development based on Experience
- Success built on success



"Here at Unique we pride ourselves in being personal enough to care, professional enough to deliver..."

Mike Bullman
Managing Director

"Our goal is one of partnership; to provide a single source of knowledge, experience, commitment and solutions to our clients projects be them new build, refurbishment or expansion within existing parameters."

Browse through the pages and see products that will delight and inspire you, featuring a host of products from some of the most reputable global furniture designers, all of whom Unique are recognised partners.

Our Education Team boasts over 400 combined years of experience and our services include Consultation, Planning, 3D CAD Design, Manufacture, Project Management and In-House Installation of all projects coupled with excellent aftercare.

Trust Unique to understand your requirements, from Activity Mats in a Primary School to a University Campus design and fit-out, no project is too small. Communication is fundamental to a successful project and is the bedrock of everything we do, with flexible adaptable designs combined with strong durable materials that produce solutions with beauty and inherent strength, fit for today's educational environments.

Understanding and embracing the technological and information changes that face the Educational arena is vital to a successful project and we look forward to helping you through this process in due course.

be assured... be inspired... be Unique

We know you've a business to run....

Complete Project Management Services

Refurbishing, moving, and equipping an office can be a strain at the best of times... and we know that you, as a successful manager, don't want to be spending any more time than absolutely necessary being buried in the painful details of office planning, furniture, and equipment.

With Unique you don't have to. Our specialist office designers take the burden of detail off your shoulders, managing your project from start to finish.

From initial planning, choosing the equipment and furniture, to tightening every last nut, bolt, and washer, we work tirelessly to make sure you can concentrate on doing what you're best at; running your own business.

Office Refurbishment

At Unique Office Solutions, we provide a total refurbishment solution. Our extensive range of product knowledge allows us to handle any task, whether it be a simple office refurbishment or a whole building makeover.

Tired of endless phone calls to different suppliers...?

We can Project Manage the whole process for you, making your office refurbishment a manageable and organised project. Our customer services team are focused on providing excellent service, and will always be there to assist.

With an in-house CAD design team, we can quickly and easily design your furniture layouts and recommend products from our extensive ranges.

Delivery and Installation

Our delivery and installation teams are aware of the need to respect the office environment they are in.

Therefore, you will find our staff to be polite, helpful, and highly experienced in the work they do, ensuring minimum fuss and disruption.

Easily recognisable in their Unique Office Solutions uniforms, our installers will be happy to advise on any situations that arise, and liaise with your office staff to ensure you are completely satisfied with the installation. Unique's fleet of vehicles from small vans to 7.5 tonne lorries also means that we can deliver to any location, and our out of hours working policy will again ensure minimum disruption to your working day.

Best Value and Fast Track Ordering

Over the years Unique Office Solutions best buys have become a resounding success and continue to offer:

- **Fast Track Ordering**
- **Quick Delivery and Installation**
- **Best Value meeting full EC Tendering Regulations**
- **Space Planning**
- **Installation**
- **Full 5 Year On-Site Guarantee**



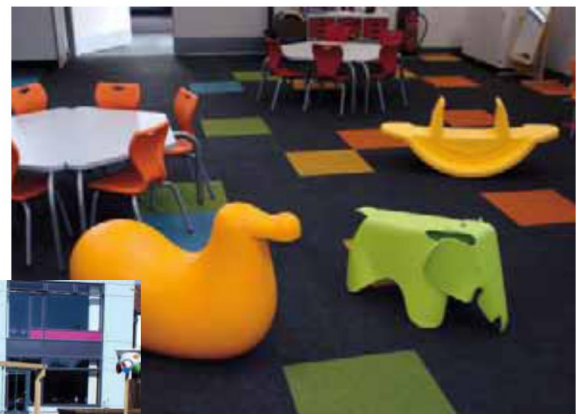
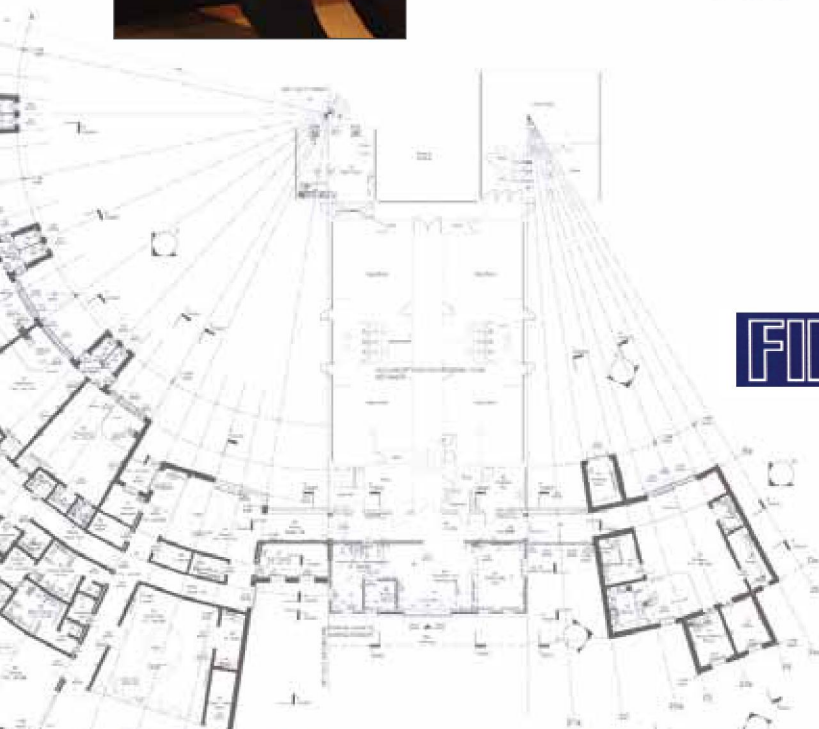
Showroom and Head Office

Unique Office Solutions Ltd,
Solutions House, 56-58 Peregrine Road,
Hainault, Ilford, Essex, IG6 3SZ

Directions from A12 Eastern Avenue (Moby Dick Pub)

- Take A1112 (Whalebone Lane North)
- At roundabout take 1st exit
- At mini roundabout take 1st exit
- Pass Hainault Golf Course on your right
- Drive over the hill and through the traffic lights
- 'Solutions House' can be seen on your left as you drive under the footbridge
- Take next turning on the left (Peregrine Road)
- Take 1st left into Business Park
- The entrance to Unique is behind SDV and Secom
- Parking bays are marked 'Unique'

Space Planning



Our Credentials, Certificates and Awards...

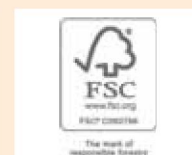
<i>Description</i>	<i>Accreditation</i>	<i>Certified</i>
Health & Safety	ISO 18001	Certified 2013
Quality System	ISO 9001	Certified 2008 Cert No. 20083318
Environmental Standard	ISO14001	Certified 2010 Cert No. 20103549
FIRA Testing	Dimensions Strength, Stability & Ergonomics Wire Management	BS EN 527: 2000 Part 1 BS EN 527:2 (2002) BS EN 527:3 (2003) BS 6396: (2008)
Sustainable Resources Chain of custody No: TT-COC-003363	FSC	Certified 2010

Unique staff are CRB checked.

All UK manufactured

Applies to all Unique Desking Manufactured in the UK.

Ranges include Unique Cantilever, Unique Beam, Unique IQ Bench and Unique IQ Squared.





contents

QUNIQUE
EDUCATION

8



GRESHAM
Working with you

84



METALLIFORM

20



Connection

88



OfficeLife
SOLUTIONS

30



vitra.

100



BISLEY

36



orangebox

110



QUNIQUE
EDUCATION
CASE STUDIES

40



colebrookbossonsaunders

120



RADFORD
HMY Group®

66



UNS
UniqueNetworkSolutions

124



FRÖVI

74



QUNIQUE
EDUCATION
OUTDOOR

130



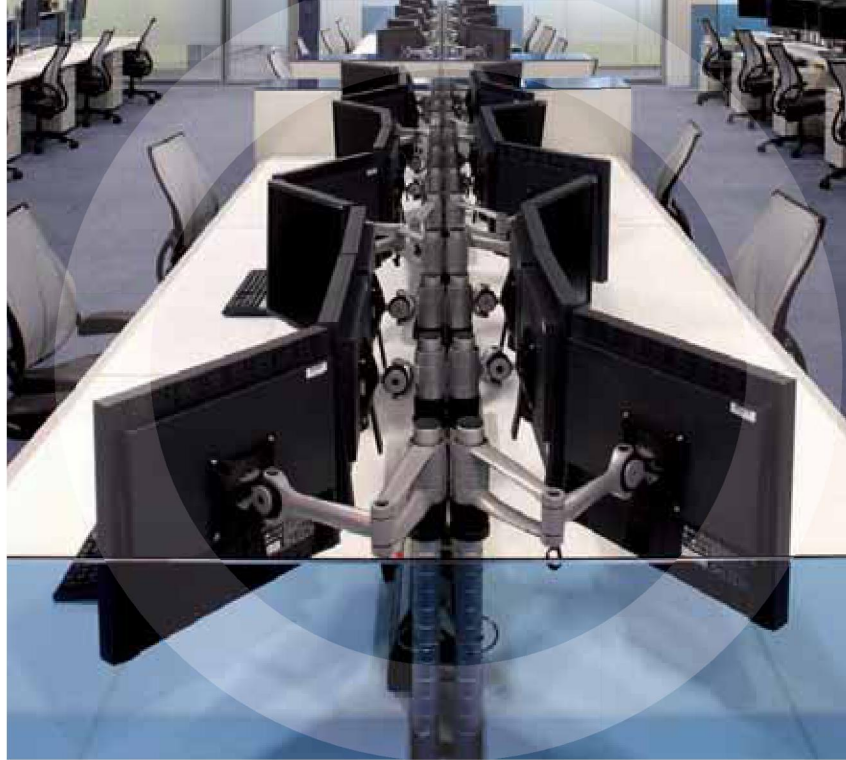


- Adjustable beam from 1000-2400mm
- Built in cable management
- 25mm thick worktops, 3mm PVC edge in Maple, Oak, White,
- Beech and Walnut as standard, other finishes available
- Retro fitted screens with metal to metal fixing to bench frame
- Scallops or cable cut out for use with integral power and data
- Sliding tops available
- 80 mm square leg frame
- Mass Cable Leg Riser
- Optional large capacity easy access cable tray to increase capacity



iQ Squared Bench

- Team work is enhanced by combining space below desk with the leg share facility.
- Features include integrated cable management within the telescopic support beam.
- iQ bench is available in standard lengths from stock, in either back to back or single run versions.
- Silver leg frames are available from stock. White to order with the choice of Oak or Maple tops from stock.



Maple, Oak, White,
Beech or Walnut



- IT stand alone workstation options



Back to Back Bench



- Adjustable beam width from 1000-2400mm
- 60mm x 40mm tubular leg frame
- Available in straight or angled leg options
- Scallops or cable cut out for power and data wiring
- 25mm thick worktops, 3mm PVC edge in Maple, Oak, White, Beech and Walnut as standard
- Retro fitted screens with metal to metal fixings
- Mass cable leg riser optional
- Large capacity cable tray optional



iQ Single Sided Bench

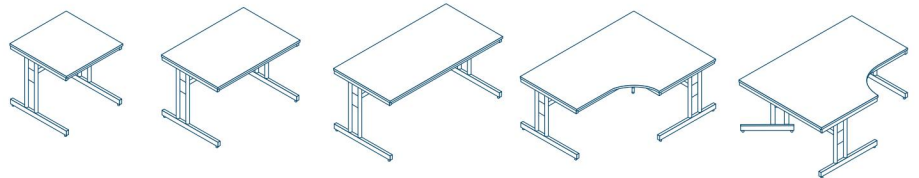


- Single sided bench with recessed leg
- Adjustable beam width from 1000-2400mm
- 60mm x 40mm tubular leg frame
- Available in straight or angled leg options
- Scallops or cable cut out for power and data wiring
- 25mm thick worktops, 3mm PVC edge in Maple, Oak, White, Beech and Walnut as standard
- Retro fitted screens with metal to metal fixings
- Mass cable leg riser optional





- Adjustable telescopic beam from 1000-1800mm
- Universal components
- Cable ports or scallops
- Single desk configuration
- 25mm thick worktops, 3mm PVC edge in Maple, Oak, White, Beech and Walnut as standard, other finishes available
- 25mm height levelling foot
- Cable managed leg
- Power + Data mounting solutions optional



Height Adjustable Desking



- Set and forget adjustable leg frame
- Height adjustable range 610-820mm
- Flexible increments 15mm + 25mm
- Telescopic leg riser plate
- Side by side & vertical cable access

- Leg frame suites with motor driven height adjustable version
- Scallops and cable cut out for power and data wiring
- 25mm thick worktops, 3mm PVC edge in Maple, Oak, White, Beech and Walnut as standard, other finishes available
- Retro fitted screens with metal to metal fixings to frame



- Height adjustable beam cantilever desking

Cantilever Desking



- Easy access cable scallops or cable port inserts
- Top options: Rectangular, Wave, Double Wave, Crescent
- 25mm thick worktops, 3mm PVC edge in Maple, Oak, Beech and Walnut as standard, other finishes available
- 25mm height levelling
- Standard leg
- Vertical cable riser optional





Panel End Desking

- Top options: Rectangular, Wave, Double Wave, Crescent
- Size Range: 1000, 1200, 1400, 1600, 1800mm widths
- Full depth modesty panel available
- 25mm thick worktops, 3mm PVC edge in Maple, Oak, White, Beech and Walnut as standard, other finishes available
- Height levelling feet
- Cable scallops or cable port insert

Classroom and ICT Suite Operators Chairs



Unique operator seating is designed and manufactured in England under the supervision of the quality management system BSEN ISO 9001: 2000. Unique seating is covered by a comprehensive 5 year structural warranty in normal use.

Unique seating has been designed to meet the requirements of current E.U.

Recommendations and conforms to the following British Standards : All moving parts are fully recyclable. B.S.5459 : Part 2.2000 Level S (Strength and stability) office pedestal seating for use by persons weighing up to 150KG and for use up to 24 hours a day. B.S. 5940: dimensions, B.S. 7179: ergonomic, upholstery foams are combustion modifies high resilient (C.M.H.R.)





Unique Fabric Options

Phoenix

5
year guarantee

Sandstorm YP107

Apple YP108

Parasol YP109

Bluebell YP097

Solano YP110

Nougat YP111

Campeche YP112

Scuba YP082

Bluefield YP021

Olympic YP113

Blizzard YP081

Windjammer YP047

Curacao YP005

Cayman YP024

Lobster YP076

Paseo YP019

Rainforest YP114

Ocean YP100

Tarot YP084

Jamaica YP027

Sombbrero YP046

Montserrat YP011

Costa YP026

Guyana YP051

Calypso YP106

Havana YP009

Taboo YP045

Arawak YP016

Tobago YP030

Belize YP105

■ This is for guide purposes only. Please ask for fabric swatch colour.

Phoenix

Composition
100% Polyester
Non metallic dyestuffs

Weight
270g/m2 ±5% (380g/lin.m. ±5%)

Abrasion Resistance
100,000 Martindale cycles with a 5 year guarantee of wearability (full details available)
BS EN 1021 - 1:2006 (cigarette)
BS EN 1021 - 2:2006 (match)
BS 7176 : 2007 Low Hazard
Note: Flammability performance is dependent on foam used.

Light Fastness
6 (ISO 105 - B02:1999)

Fastness to Rubbing
Wet: 4 Dry: 4 (ISO 105 - X12:2002)

Maintenance
Vacuum regularly.
Wipe clean with a damp cloth or shampoo using proprietary upholstery shampoo.

Colour Matching
Batch to batch variations in shade may occur within commercial tolerances.



Ergonomics Task Chairs

- 2/3 Lever Mechanism offering Seat Height, Seat Angle and Back Rake Adjustments
- Full Backs

Posture Chairs

- Full back operator armchair with neck support
- Ergo tension synchro
- Multi-function height Adjustable Arm
- Dual Bag Lumbar Support
- Sliding Seat

Operator Chairs

- High back Operator Chairs
- Side Tension Synchro
- Auto Back Height
- Black Nylon Base

Synchro Mechanism Chairs

- Synchro Mechanism with concealed Back
- Height Back Adjustment
- Width and Height Adjustment Arms
- Extra Large Seat





- UK Manufactured
- Oak, Maple, Beech, White fast track stock
- 18mm Thick base
- Fifth Castor
- Steel Side Drawers
- Steel Pedestals 2/3 drawer
- Side Opening Tambour Units
- 2 Door Storage Cupboards
- Silver handle supplied as standard



- Various colour options
- Sturdy plastic construction



Locker Room Storage



UNIQUE offers the wide range of modular space planning footprints with the flexibility of bespoke frontages that are tailored to each customer's needs.

The units can be designed to fit around elements within the building structure as well as keeping a fluid feel to the working environment

Many different levels of interaction and privacy can be incorporated not only within an office but to an individual wall of cupboards.

UNIQUE offers solutions to new working practices in a way no other storage system can.



The ability to change and meet these demands is achieved through the flexibility in design, which can be shown in applications from personal storage needs using our locker solutions to Audio Visual walls for boardrooms and classrooms.

The increased availability and versatility of the materials used enables us to create contrasting visual statements from classical booked matched veneers to the striking manifestations.

A guide to purchasing school furniture with compliance to the current British and European Standards.

The current British and European Standards for "Chairs and tables for educational institutions" were approved in 2007.

The new standards are:

BS EN 1729 part 1 - Functional dimensions
BS EN 1729 part 2 - Safety requirements and test methods.

Whilst most existing school furniture will pass BS EN 1729 part 2, the fundamental changes to compliant furniture design are in BS EN 1729 part 1 which relates to the appropriate size, shape and ergonomic design of classroom furniture to maintain good posture and reduce RSI and back pain in school children.

To help you purchase furniture that complies to the new British and European standards, the following Sizemark guide indicates which fixed seat heights and table heights are suitable for the child's age and size.

To ensure you purchase the most accurate height furniture for the individual child in compliance with the standards, we recommend that you measure the stature and Popliteal height of the child. You can then match those measurements with the following sizemark guide.



COLOUR CODE	ORANGE FEET	VIOLET FEET	YELLOW FEET	RED FEET	GREEN FEET	BLUE FEET
SIZE MARK	1	2	3	4	5	6
AGE RANGE	3 - 4	4 - 6	6 - 8	8 - 11	11 - 14	14 - Adult
POPLITEAL HEIGHT RANGE	250 - 280	280 - 315	315 - 355	355 - 405	405 - 435	435 - 485
STATURE RANGE	930 - 1150	1080 - 1210	1190 - 1420	1330 - 1590	1460 - 1765	1590 - 1880
STANDING TABLE HEIGHT	590	710	760	900	1000	1000
TABLE HEIGHT	460	530	590	640	710	760
CHAIR HEIGHT	260	310	350	380	430	460

Unique NP Classroom Chairs



▶ Start Right ST Chairs

15
YEAR

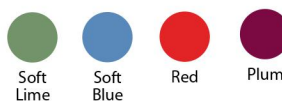
FULLY EN1729
COMPLIANT

This modern design is available in 4 outstanding colours and a silver frame is supplied as standard. Start Right ST Chairs are comfortable and supportive across all age ranges. Low teachers chair is available at 360mm to allow interaction with pupils.

Step 1 Choose your chair size

	Code
Seat Height 210mm Age 2-3 years	ST0
Seat Height 260mm Age 3-4 years	ST1
Seat Height 310mm Age 4-6 years	ST2
Seat Height 350mm Age 6-8 years	ST3
Seat Height 380mm Age 8-11 years	ST4
Low Teachers ST Chair 360mm	STAD36

Step 2 Choose your shell (seat) colour



Step 3 Choose your frame colour



▶ NP Chair Range

5
YEAR

FULLY EN1729
COMPLIANT

NP Classroom Chair

The NP chair is particularly comfortable with its well defined lumbar support back. The largest size 5 and 6 chairs can be fitted with a variety of accessories, making this a robust, general purpose chair with many uses.

Step 1 Choose your chair and size

Size	Seat Height	Age	Code
1	260mm	3-4 years	NP1
2	310mm	4-6 years	NP2
3	350mm	6-8 years	NP3
4	380mm	8-11 years	NP4
5	430mm	11-14 years	NP5
6	460mm	14-Adult	NP6

NP High Chair

Our NP5 shell (seat) is available as a high chair in two sizes. Perfect for science labs, art studios or music rooms.

Seat height
610mm
685mm

Code
NP5ST4
NP5ST5



Activity and Play



This fantastic new range of resources is designed to inspire, innovate and ignite imagination.

From cushions and beanbags to gym and activity equipment, the range has something for every environment!

This wide range of resources has been carefully selected to include educational learning aids, to provide stimulating ways to involve and develop children in numeracy, literacy, and logic and reasoning.

Each set of 4 Extra Large Number Cubes can be used in numeracy games to add a new stimulus for learning. Or alternatively there are Extra Large Alphabet Cubes to make literacy sessions more interactive and engaging. Interactive Floor Mazes allow children to develop both dexterity and reasoning skills by working together to move the coloured pegs around the fun animal mazes to reach an end goal.

If it's a quiet reading corner or exciting break out zone that's required, this range has everything and more!



Tables and Chairs

High quality fully welded tables with stylish, chunky tubular legs. Standard 18mm MDF tops with a hardwearing laminate. The top choice for early years classrooms.

Supplied with matching top and frame colour.



Start Right ST Chairs

Size (length x width x height)

RECTANGULAR

- 1 1100mm x 550mm x 460mm
- 2 1100mm x 550mm x 530mm
- 3 1100mm x 550mm x 590mm

Age

- 3-4 years
- 4-6 years
- 6-8 years

Code

- RTSS-115-46
- RTSS-115-53
- RTSS-115-59

TRAPEZOIDAL

- 1 1100mm x 550mm (3 shortest edges) x 460mm
- 2 1100mm x 550mm (3 shortest edges) x 530mm
- 3 1100mm x 550mm (3 shortest edges) x 590mm

- 3-4 years
- 4-6 years
- 6-8 years

- RTSS-11LE-46
- RTSS-11LE-53
- RTSS-11LE-59

CIRCULAR TABLES

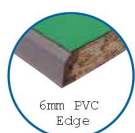
- 1 1100mm diameter x 460mm
- 2 1100mm diameter x 530mm
- 3 1100mm diameter x 590mm

- 3-4 years
- 4-6 years
- 6-8 years

- RTSS-11C-46
- RTSS-11C-53
- RTSS-11C-59



These bright and attractive tables are made to nest and have round tubular legs with an 18mm MDF bullnose edge. Supplied with matching top and frame colour.



This stylish 32mm round frame is supplied with a resilient 25mm MDF top which is finished with unbeatable Duraform edging.

Step 1 Choose your table Code

Round Table

1100mm Diameter EQUPR-11C-PS

Trapezoidal Table

1100mm x 550mm EQUPR-11LE-PS
1200mm x 600mm EQUPR-12LE-PS

Square Tables

600mm x 600mm EQUPR-66-PS
750mm x 750mm EQUPR-77-PS

Rectangular Tables

1100mm x 550mm EQUPR-115-PS
1200mm x 600mm EQUPR-126-PS
1500mm x 750mm EQUPR-157-PS

Arc Table

1490mm x 635mm EQUPR-ARCV2-PS
(2100mm when 4 together to make a circular shape)

Semi Circular Table

1200mm Diameter EQUPR-12SC-PS



Equation Range Tables



Spiral Stacking Tables

BEST TABLE CHOICE WHEN YOU NEED:

- Snug, tight fit when pushed together
- Easy stacking
- Flexibility to mix and match table shapes neatly
- Sturdy steel frame
- Hardwearing 25mm MDF top with quality laminate finish.

Step 2 Choose your size and height

Size (length x width)	MDF EDGE
SQUARE	
550mm x 550mm	SQSS-55-MD
600mm x 600mm	SQSS-66-MD
750mm x 750mm	SQSS-75-MD
900mm x 900mm	SQSS-99-MD
1200mm x 1200mm	SQSS-1212-MD
RECTANGULAR	
900mm x 600mm	SQSS-96-MD
1100mm x 550mm*	SQSS-115-MD
1200mm x 600mm**	SQSS-126-MD
1200mm x 750mm	SQSS-127-MD
1500mm x 600mm	SQSS-156-MD
1500mm x 750mm	SQSS-157-MD
1800mm x 600mm	SQSS-186-MD
1800mm x 750mm	SQSS-187-MD
SEMI CIRCULAR	
1100mm Diameter	SQSS-115C-MD
1200mm Diameter	SQSS-125C-MD
CIRCULAR	
600mm Diameter	SQSS-6C-MD
750mm Diameter	SQSS-75C-MD
1000mm Diameter	SQSS-10C-MD
1100mm Diameter	SQSS-11C-MD
1200mm Diameter	SQSS-12C-MD
TRAPEZOIDAL	
1100mm x 550mm (3 shortest edges)	SQSS-11LE-MD
1200mm x 600mm (3 shortest edges)	SQSS-12LE-MD

*Standard Primary Size **Standard Secondary Size

Step 3 Choose your laminate top colour



Standard laminate colours available on request.

Step 4 Choose your frame colour



Size 1	Height 460mm	Age 3-4 years
Size 2	Height 530mm	Age 4-6 years
Size 3	Height 590mm	Age 6-8 years
Size 4	Height 640mm	Age 8-11 years
Size 5	Height 710mm	Age 11-14 years
Size 6	Height 760mm	Age 14-Adult



Craft and Lab Tables

FULLY WELDED and CRUSHED BENT

This fully welded or crushed bent H frame table, made with standard 25mm square steel tube, gives a traditional feel to your classroom. Mix and match frame and top to add some colour and a fresh new look to your tables.

Size (length x width)

1200mm x 600mm
1200mm x 750mm
1500mm x 750mm

MDF EDGE

CRAFT-126-MD
CRAFT-127-MD
CRAFT-157-MD

DURAFORM PU EDGE

CRAFT-126-PS
CRAFT-127-PS
CRAFT-157-PS

TRESPA

CRAFT-126-TRESP
CRAFT-127-TRESP
CRAFT-157-TRESP

PREMIUM FRAME

This chunky 50mm round tube frame gives a bespoke designer feel to your H frame table. This premium frame H frame table comes with a 10 year guarantee and really will give your classroom both style and practicality in one.

Size (length x width)

750mm x 750mm
1200mm x 600mm
1200mm x 750mm
1500mm x 750mm

MDF EDGE

PRCRAFT-77-MD
PRCRAFT-126-MD
PRCRAFT-127-MD
PRCRAFT-157-MD

DURAFORM PU EDGE

PRCRAFT-77-PS
PRCRAFT-126-PS
PRCRAFT-127-PS
PRCRAFT-157-PS

TRESPA

PRCRAFT-77-TRESP
PRCRAFT-126-TRESP
PRCRAFT-127-TRESP
PRCRAFT-157-TRESP





These rigid, fully welded steel frame tray storage units are supplied fully assembled, complete with tray runners and are ready to use. Trays are not included but our storage units are fully compatible with all leading makes of A4 school trays - standard, deep and jumbo sizes.

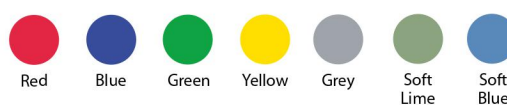
Make your storage unit mobile by specifying heavy duty castors. We also offer steel or wooden (laminate) worktops if required.

No. of trays	Size Width x Depth x Height	Code
A4 TRAY STORAGE		
6 tray storage	366mm x 435mm x 540mm (1x6 static)	8006
7 tray storage	366mm x 435mm x 621mm (1x7 static)	8007
8 tray storage	366mm x 435mm x 702mm (1x8 static)	8008
12 tray storage	705mm x 435mm x 540mm (2x6 static)	8012
14 tray storage	705mm x 435mm x 621mm (2x7 static)	8014
16 tray storage	705mm x 435mm x 702mm (2x8 static)	8016
18 tray storage	1048mm x 435mm x 540mm (3x6 static)	8018
21 tray storage	1048mm x 435mm x 621mm (3x7 static)	8021
24 tray storage	1048mm x 435mm x 702mm (3x8 static)	8024
27 tray storage	1048mm x 435mm x 783mm (3x9 static)	8027
36 tray storage	705mm x 435mm x 1540mm (2x18 static)	8036
54 tray storage	1048mm x 435mm x 1540mm (3x18 static)	8054
60 tray storage	1048mm x 435mm x 1703mm (3x20 static)	8060



Rigid, fully welded storage units. Compatible with standard, deep and jumbo A4 school trays.

You can add trays to your order. In terms of size remember two shallow trays = one deep tray. Each tray will both nest and stack.



Shallow trays
75mm deep SUB-TRAY-STD



Deep trays
150mm deep SUB-TRAY-DP



Meeting Room and Study Tables

The Contemporary Meeting Table system is a must-have solution for any modern school. This versatile range can be easily configured into any layout to provide an exciting environment that can be further enhanced with our wide variety of vibrant laminate options and frame colours.

The premium 45mm round tube frame and 25mm thick top provide a hard wearing finish at a great price. All tables come in Duraform spray PU edging enhancing the looks and lifetime of your tables.

This range comes at a standard height of 725mm high.

Step 2 Choose your laminate top colour

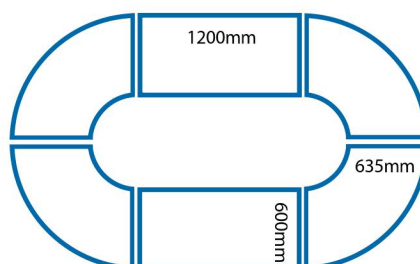
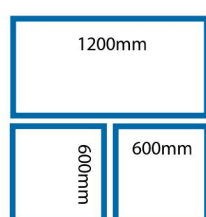
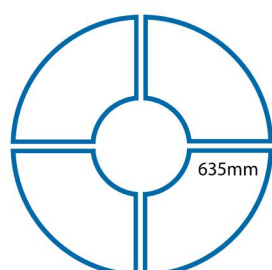
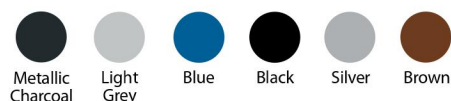


Standard laminate colours available on request.

Step 3 Choose your edge colour



Step 4 Choose your frame colour



Example layouts



Square

600mm x 600mm	MEET-66-PS
750mm x 750mm	MEET-77-PS

Rectangular

1200mm x 600mm	MEET-126-PS
1200mm x 750mm	MEET-126-PS
1500mm x 600mm	MEET-156-PS
1500mm x 750mm	MEET-157-PS
1800mm x 600mm	MEET-186-PS
1800mm x 750mm	MEET-187-PS

Circular

1000mm diameter	MEET-10C-PS
1200mm diameter	MEET-12C-PS

Curved

Longest length point to point
1490mm MEET-ARCV2-PS

Shortest length point to point
635mm. Four tables together make a
2100mm diameter circular table with
an 800mm gap.



Early Years Furniture

This vibrant new soft seating range comes in three unique styles. The range includes swim, sky and hedgerow designs. Each consisting of a 3 seater sofa, 2 seater sofa, chair and foot stool, upholstered in quality wipeable suedette fabric and available in blues, reds and creams.

3 Seater Sofa



N4841003

2 Seater Sofa



N4841002

Chair



N4841000

Foot Stool

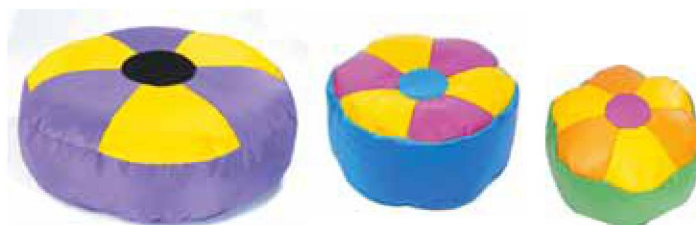


N4841001



Cushions and Beanbags

This fantastic new range of cushions and beanbags bring excitement to the everyday classroom environment with bright colours and abstract designs. These items are perfect for creating reading corners, quiet zones or even break out play areas.





Nursery Stools

Set of six assorted nursery stools with coloured velour seats. These stools provide the perfect addition to a reading or listening area, giving children a focal point to aid concentration and learning.



Premium Number Cushion Set

Set of 0-9 premium number cushions in different colour combinations. These soft velour cushions are multi-functional; great for use in quiet listening areas, or alternatively for use in number recognition games and activities increasing numeracy skills.



Interactive Learning

This exciting range of educational activity equipment provides stimulating ways to involve and develop children in numeracy, logic and reasoning skills.



Teacherwall.

Teacherwall is the smart new modular teaching and storage system that the education sector has been waiting for.

For primary schools, Teacherwall is the perfect solution to create an efficient, tidy classroom with the high volume storage facility Teacherwall will provide.

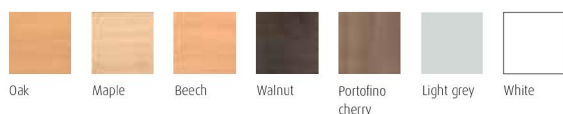
To direct the attention of the students of all ages to one area of the classroom, there are two sliding whiteboards to compliment the interactive whiteboard. Behind the sliding whiteboards there are seven cubic metres of storage space available.



Teacherwall is designed to take educational trays in any compartment. Trays are available in any standard colour.



Standard finishes



Front panel colours



Teacherwall E-beam.

Teacherwall is designed for the E-beam system which does not need an interactive board. This system takes the Teacherwall to a higher level of storage efficiency with three sliding white boards, creating 14 cubic metres of upper storage space.

The E-beam Teacherwall system offers all the same options as the original Teacherwall system.



Shown without doors fitted

Schoolwall.

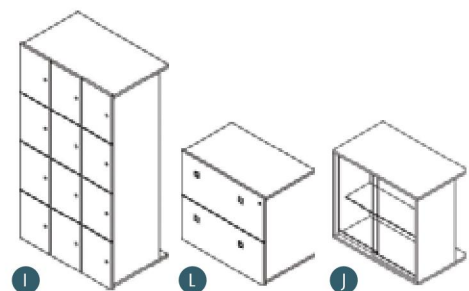
Schoolwall offers entirely new dimensions and innovative solutions to Classroom and Corridor storage.

The Schoolwall system by OfficeLife is designed to be a fully integrated classroom/corridor system capable of proving high volume storage.

The system maximises storage whilst minimising the usage of floor space; the result is functional with striking aesthetic appeal.

By using any combination of the twelve optional interchangeable inserts, Schoolwall can be specified for any application capable of achieving the required functionality.

There is no standard size for the Schoolwall system, every one is tailor made to suit your Classroom. A site survey is carried out with all quotations.

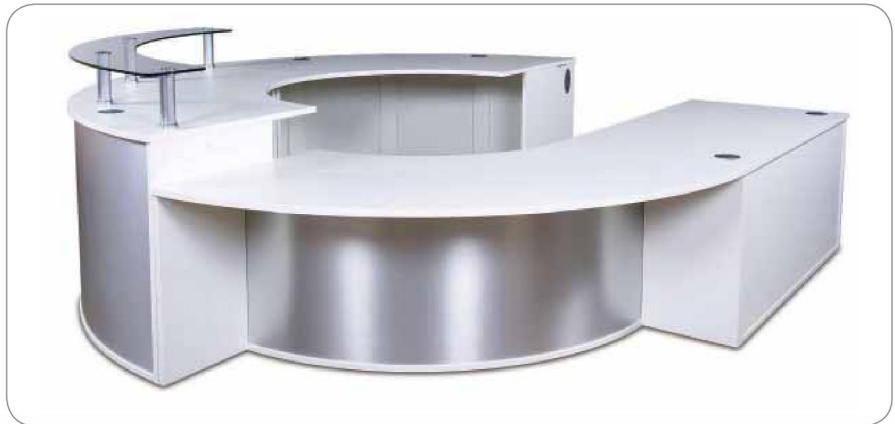


- A. Sliding door cupboard
- B. Two compartment bookcase
- C. Fabric covered pinboard cupboard
- D. Two door hinge cupboard
- E. Four compartment bookcase
- F. Three drawer unit
- G. Gratnell tray unit
- H. Cloak room unit
- I. Locker unit
- J. Teacher two drawer filing cabinet unit
- K. Large book storage
- L. Glass door bookcase

R70 reception systems.

Finesse.

The Finesse reception is a sophisticated solution for your business giving you a great first impression for all your clients and visitors.



Juice.



Juice is designed to give that all important first impression, fresh and clean. All the Juice counter modules have a coloured front panel with concealed LED lights creating style and atmosphere to your reception area.



Urban.

Urban has been designed to be a semi compact reception system, offering style and functionality. The range is produced in standard modular sizes with an optional in built wheelchair access.



Study carrel system.



Study-link

The study carrel system comes in two product options, Link and Centre.

Study-link.

The Link system is a double or single sided linked desk system divided by screens; with the link system you can add extra carrels at a later date if needed. Desk sizes come as standard at 800mm wide and 1,000mm wide. All side and dividing screens are 1,200mm high.

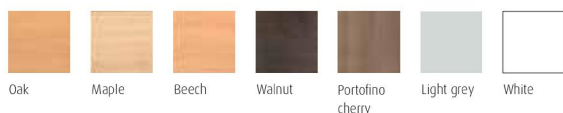
Study-centre.

The Centre system is a circular stand alone pod system, available in seven sizes for: Three person, Four person, Five person, Six person, Eight person, Ten person and Twelve person



Study-centre

Standard finishes



Oak

Maple

Beech

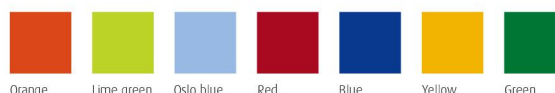
Walnut

Portofino
cherry

Light grey

White

Front colours (optional)



Orange

Lime green

Oslo blue

Red

Blue

Yellow

Green

Other colours are available on request.

IT desking.

The IT Desk was designed following a growing requirement for a secure solution for IT equipment. OfficeLife has two versions to choose from, Saturn and Mercury.

Saturn.

A cost effective high quality IT desk range with two styles of desk, laptop or PC. Both desks have a metal chassis for the IT equipment to fit into offering total security, easy accessibility and user comfort.



Mercury.

A flexible cost effective IT desk system offering both PC and laptop versions in the range. Both desks use the sliding top system to access the IT equipment, all sliding tops are mounted on ball bearing runners capable of taking a weight load of 40kg.

The PC version has a unique pop up monitor arm, when activated it allows the monitor to glide up into the operating position and will push down to be stored away.



Finishes



Double side bookcases.

OfficeLife bookcases are available in six product options, curved, straight, mobile, static, double sided and single sided and all six are available in a two colour option.



All with four adjustable shelves



IT desk and bookcase standard finishes



Oak Maple Beech Walnut Portofino cherry Light grey White

Top/shelf/base panel colours (optional)



Orange Lime green Oslo blue Red Blue Yellow Green

Other colours are available on request.





Education Storage Solutions

All Bisley manufactured products are 'education specified' to our clients requirements.

Complementing each product technical specification, the Bisley educational specification ensures that every Bisley product is backed by a well-managed, customer-focussed company, continuously reinvesting in its future.



Multidrawers and Insert Trays

Lower heights and simpler configurations, the Home Multidrawers provide even better value storage. 7 units in total, the Home Multidrawers represent the most popular configurations from the 12, 29 and 39 Series.

Plastic insert trays can be fitted to all Bisley multidrawer units. Multiple height versions are available to match drawer heights.



1. 9 compartment insert tray
2. 24 compartment insert tray
3. 16 compartment insert tray
4. A4 pen tray

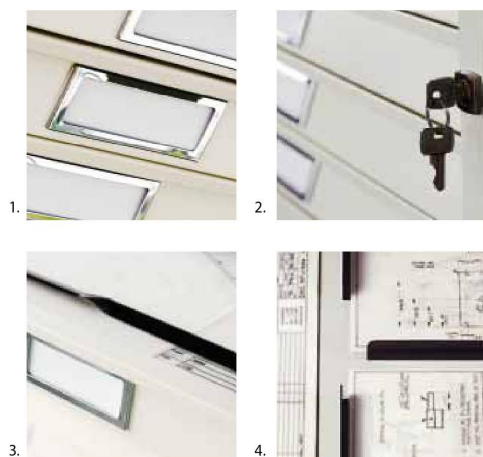


A0 & A1 Paper Storage

The renowned Bisley Plan File is still a common sight in schools, design offices and studios across Europe and even though fewer large format documents are stored in this way, there is still a requirement for protected, practical storage of drawings, plans, samples and collections.

Bisley paper storage are available in five or ten drawer units and either A0 or A1 size; intermediate five drawer sections are also available to further increase capacity.

- A0 drawers are tested to an load of 50kg (25kg A1 drawers)
- Stack plan files up to 15 drawers, adding capacity at a later date



1. two large label holders per drawer
2. mastered lock, 200 differs
3. all drawers fitted with pressure bar and hood to prevent creasing and curling
4. all drawers are slotted and can be subdivided into other A sizes

Practical and robust, Bisley manufactured filing cabinets are still the best solution to straight forward filing requirements.

All drawers are mounted on high-durability slides which provide ultra-smooth action and full extension for access to the whole drawer.
All cabinets feature integrated drawer interlocks and are rigorously tested to BS4875 Pt7: Strength & Stability of Furniture.



- 100% extension drawers (0.56m linear capacity)
- fully welded carcase without bolts or rivets for greater strength and cleaner line
- backs and sides are pierced to enable units to be bolted together
- filing cabinets can be fitted with compressor plates

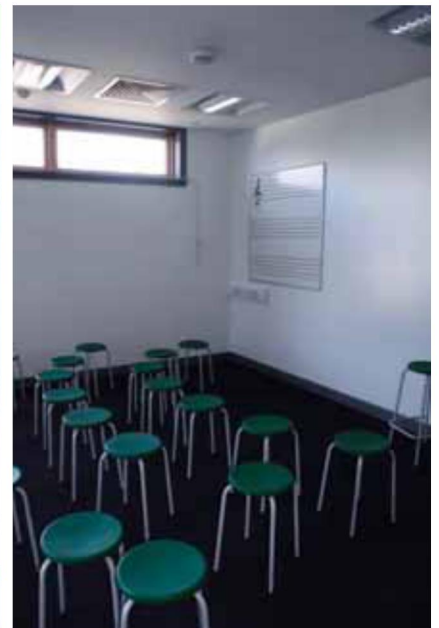


the best of British
a **Unique** range of Education Storage

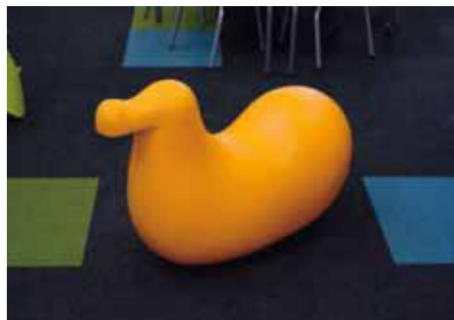
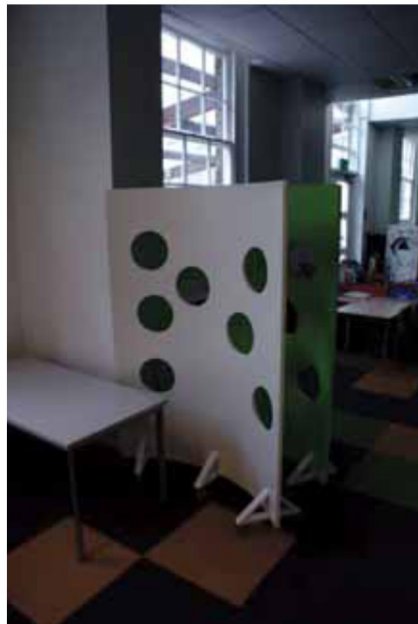
Queens Road School, Waltham Forest



Gallery - Case Studies



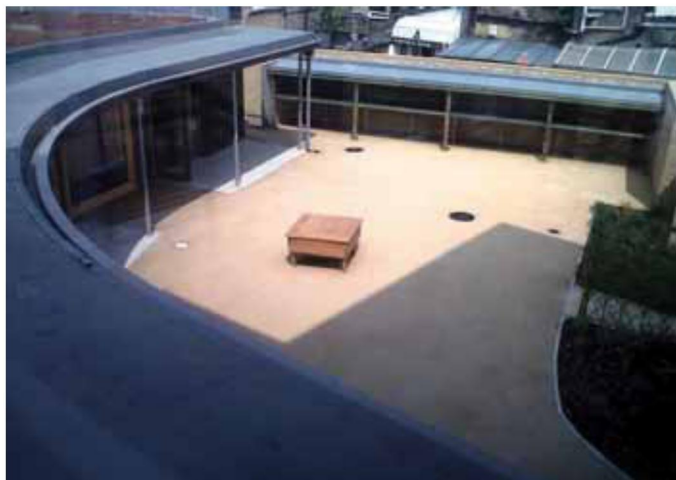
Queens Road School, Waltham Forest



Gallery - Case Studies



Stockwell Primary School, Lambeth



Gallery - Case Studies



6th Form / Further Education Break-out areas



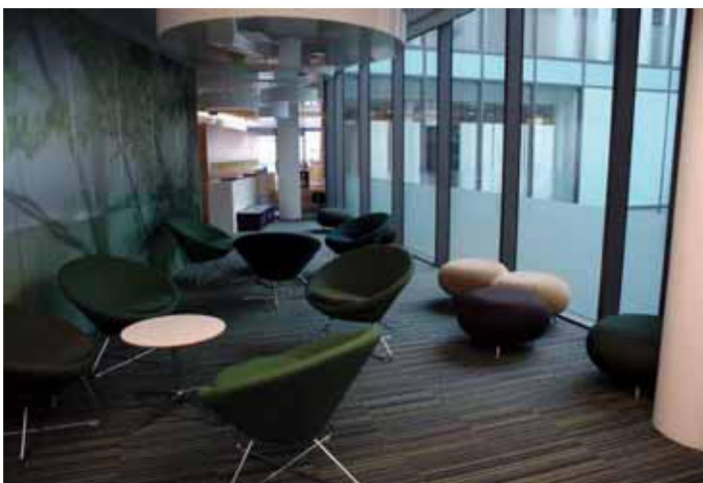
Gallery - Case Studies



6th Form / Further Education Break-out areas



Gallery - Case Studies



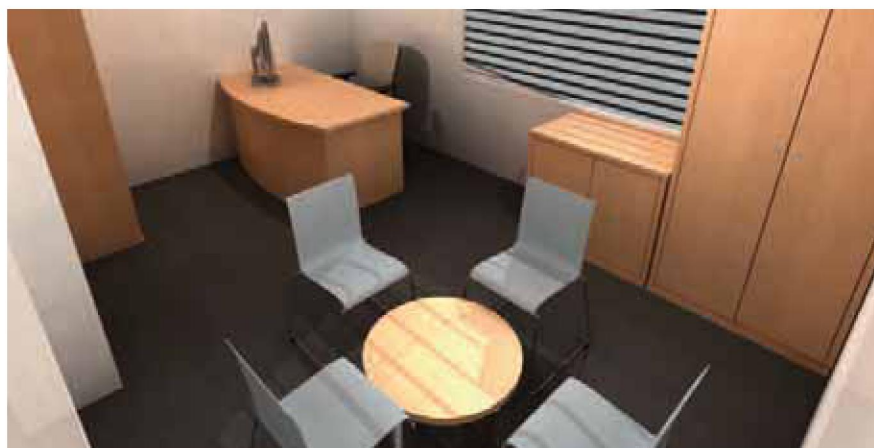
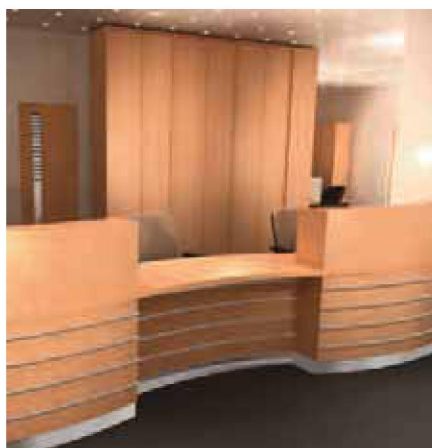
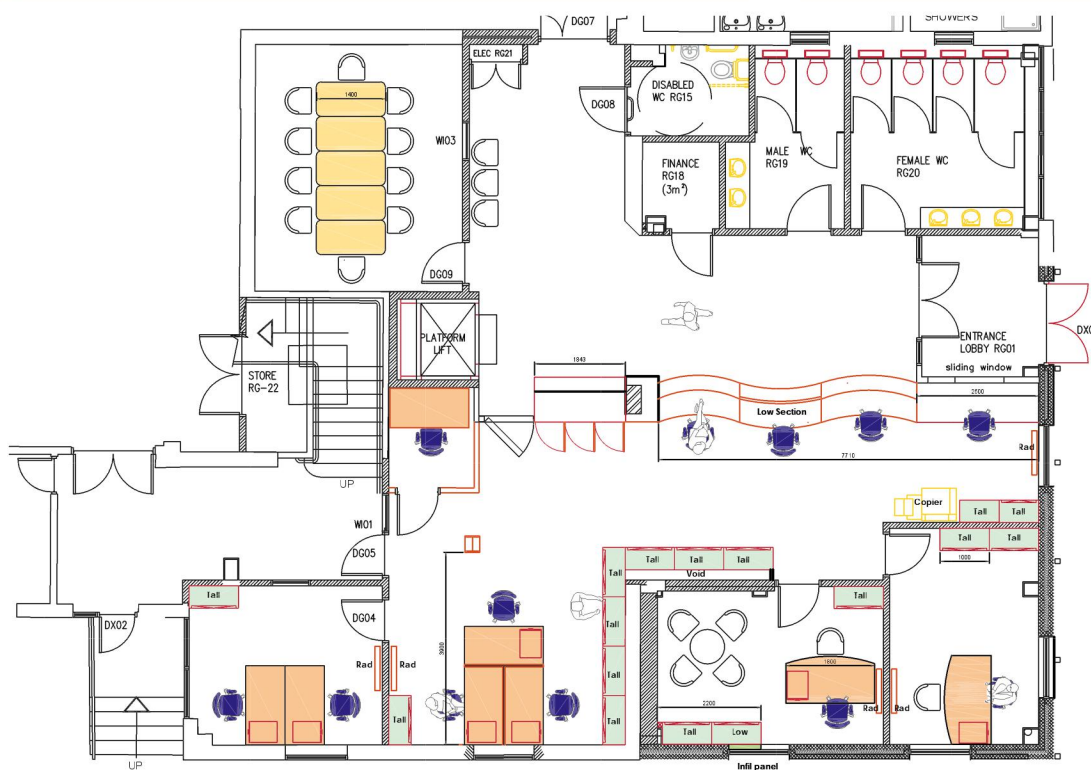
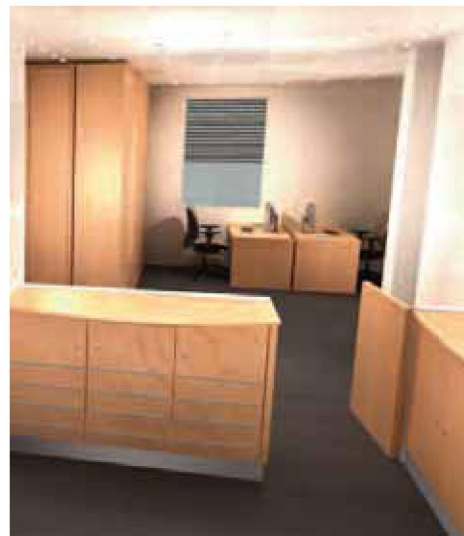
London Borough of Barking and Dagenham Library refurbishment



Gallery - Case Studies



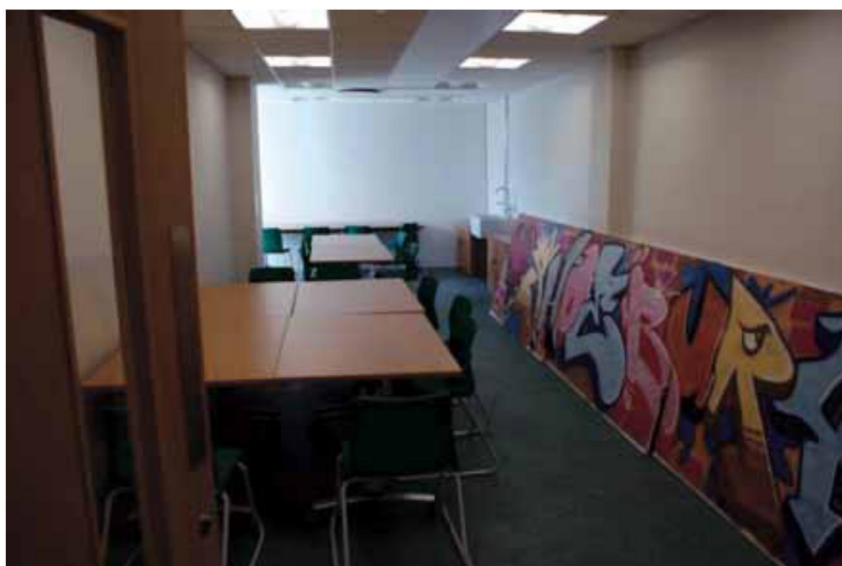
St Christophers School, reception refurbishment



Gallery - Case Studies



Shoeburyness Youth Centre, Southend-on-Sea



Gallery - Case Studies



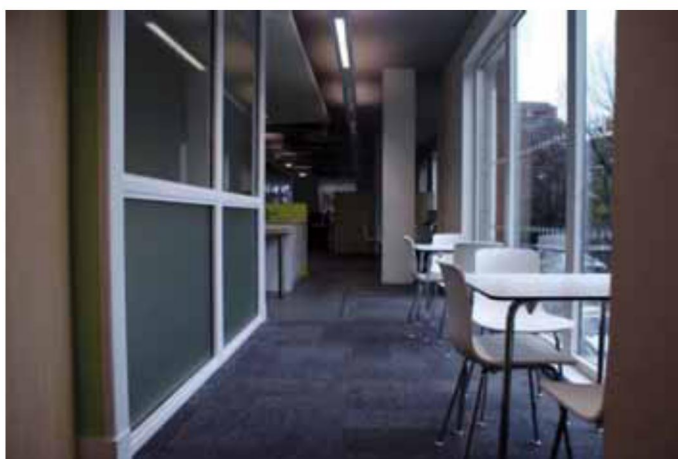
Westcliff High School for Girls



Gallery - Case Studies



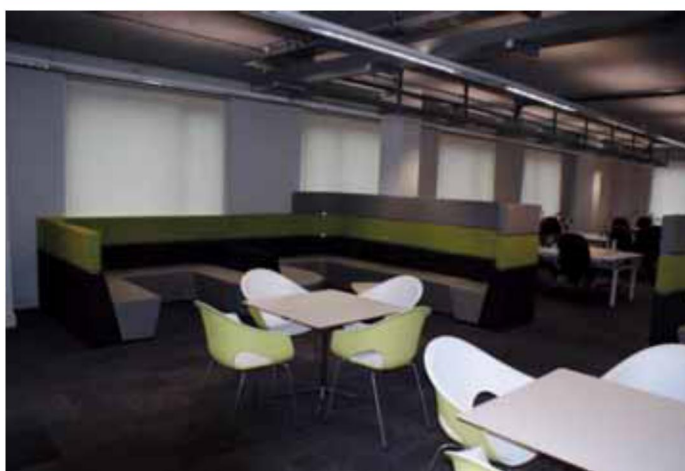
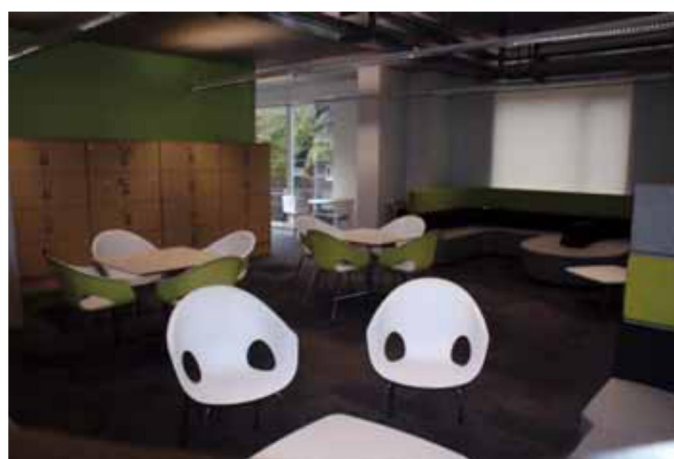
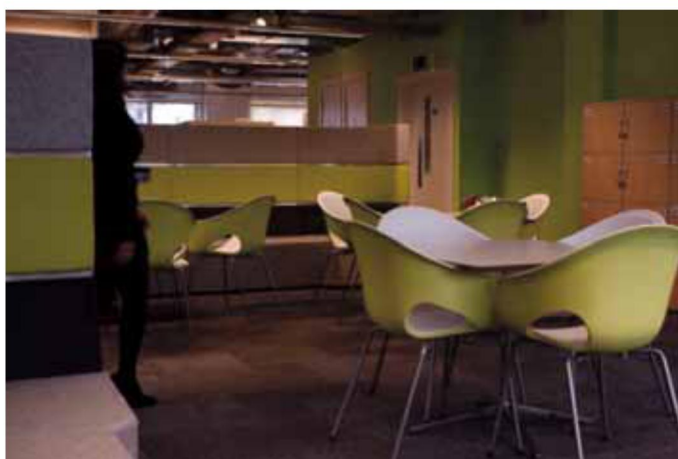
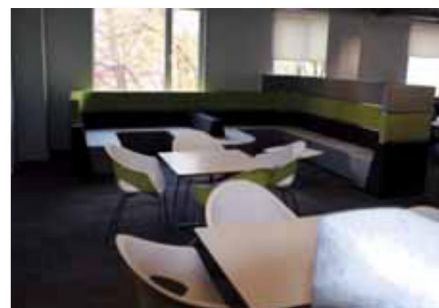
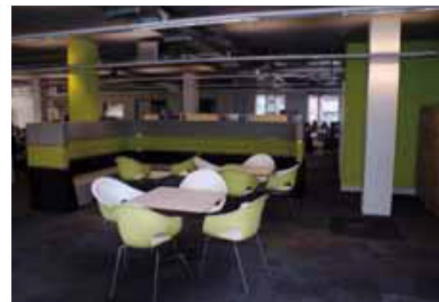
London Borough of Islington, 1st Floor, Newington Barrow Way



Gallery - Case Studies



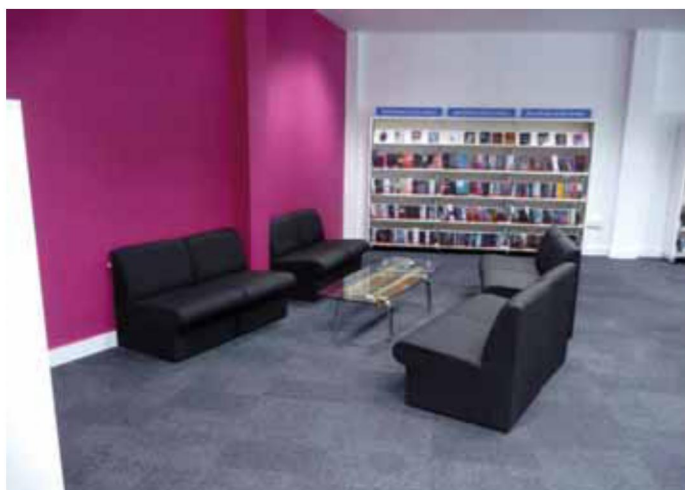
London Borough of Islington, 1st Floor, Newington Barrow Way



Gallery - Case Studies



London Borough of Newham, Stratford Library



Gallery - Case Studies



London Borough of Newham, Stratford Library



Gallery - Case Studies





Who We Are

Radford HMY Group have been established for over thirty years and we have honed our manufacturing, project management and installation skills in the demanding and fast-paced retail shelving market.

In recent years, we have brought this expertise to the library environment, enabling you to access our years of experience in providing customer-focused solutions to some of the most demanding clients in the UK market. Radford is part of the international HMY Group, one of the World's largest and Europe's leading specialist in the design, manufacture, installation and project management of shelving and display equipment.



What We Do

As a large and established manufacturer, we utilise the latest manufacturing processes and technology to produce high quality equipment in large volumes. This ensures that we can provide you with your desired system on a short lead time and within your project budget.

Our stringent quality control systems are designed to meet exacting standards, so you can be assured that your new system will be finished to the highest quality, and be delivered to you at a very competitive price.

We offer a full project capability, from concept design using state of the art presentation systems through to complete and integrated project management service. Radford HMY Group operates highly trained and qualified installation teams across the UK, ensuring your project is completed on time and to cost.

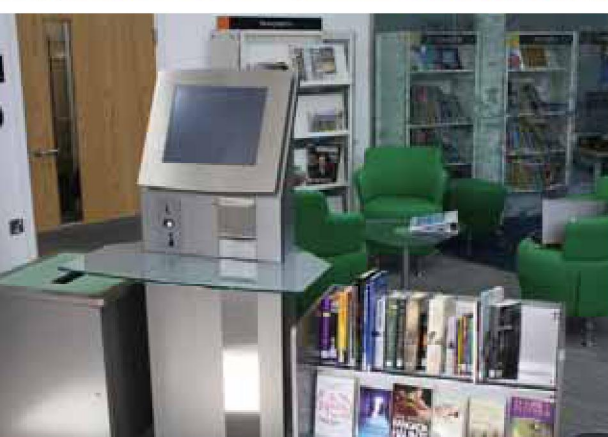
Our company is strongly committed to the principles of CSR, and has policies and procedures in place to ensure that our operations have a minimal impact on the environment. Our library shelving systems are comprised of at least 40% recycled steel, and we can also ensure that any timber used is sourced from sustainable supplies. We operate a strict environmental management policy, and are accredited with ISO 14001:2004 certification. You can be assured that by choosing Radford HMY Group as your library partner, your project's environmental impact will be minimised.



Media Display

We recognize that in today's libraries, books are only part of the wealth of information on offer.

We can use our experience of the retail industry to provide you with display options for CD's, DVD's, Videos, magazines and periodicals, as well as state of the art interactive listening/information posts, ensuring that whatever media you offer your users, Radford can help you display it in the best possible way.



 **Innovate**²⁵



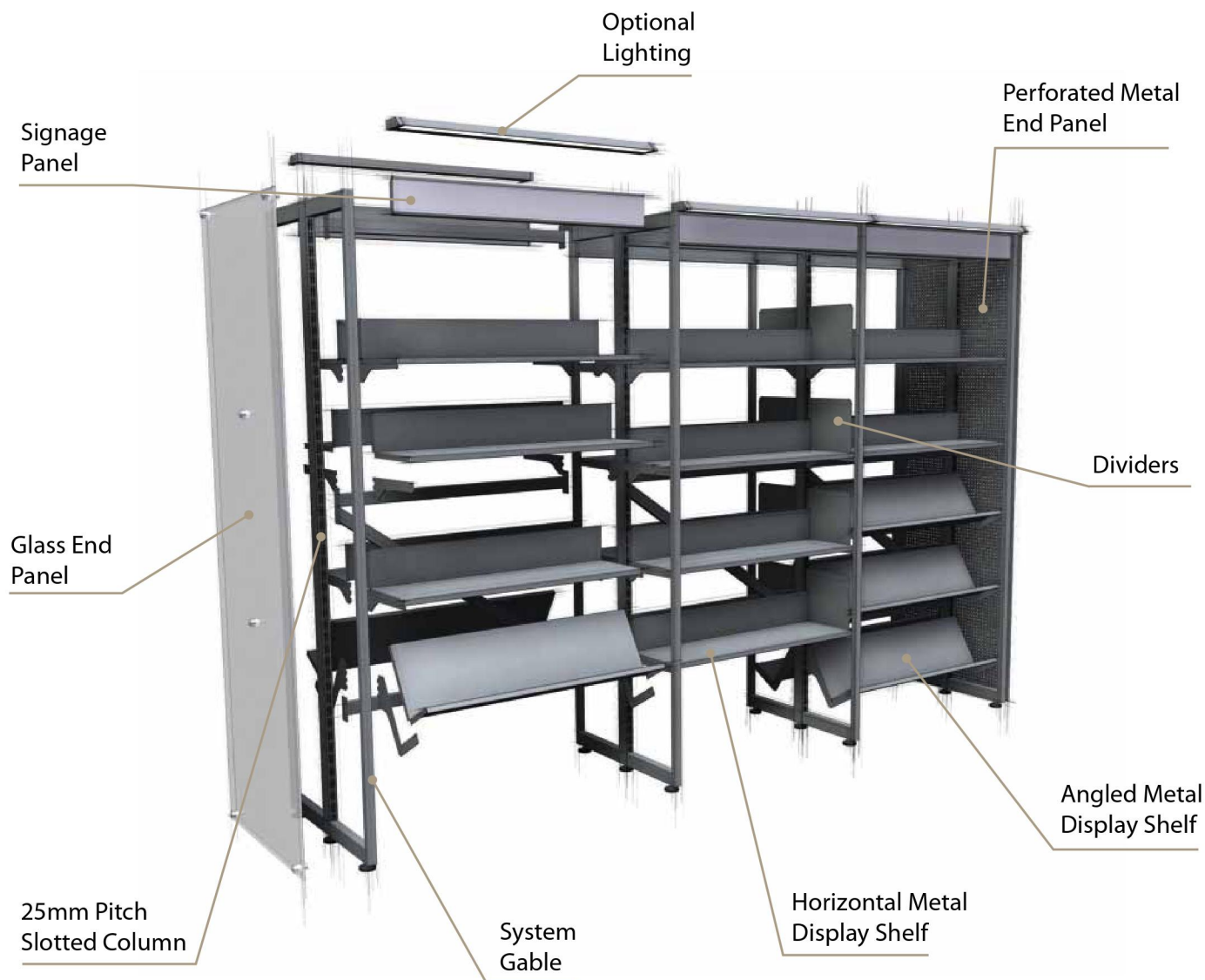


Furniture

Unique Group knows that shelving is only part of the equation for a successful and user-friendly library environment. We can also provide you with a range of furniture to help you get the most out of your library space. This additional service can offer you a huge range of furniture, from coffee tables and coat stands to stools and sofas, manufactured or procured to your specification.

We offer furniture solutions from traditional to ultra contemporary designs, ensuring that your furniture fits in perfectly with your new library environment. We can also produce bespoke designs for a range of desks, counters and tables for a variety of applications, using our in-house joinery department to manufacture your furniture to the highest standards.

Alternatively, you can utilise our purchasing power to procure you an 'off-the-shelf' solution at a very competitive price, from companies such as Orange Box, Johansen and Parri. Whether bespoke or off-the-shelf, all the furniture we provide complies with relevant British Standards, and can be supplied with guarantees tailored to the planned lifetime of your library environment. Combined with our shelving solutions and our design, project management and installation services, our furniture offering completes our integrated project solution for the library market.



The Innovate System

Radford HMY Group's core library offering, Innovate 25, is a clever modular system that has been specifically designed to be flexible and adaptable to your needs. This modularity means our system can be installed in a variety of library environments, sized from a single bay to an unlimited length of shelving.

Innovate 25 is available in a range of colours and styles, so from listed buildings to new builds, the system is aesthetically pleasing and simple to install. There is no need to fix Innovate 25 to floors or ceilings, and because the system is modular, if you need to revise your layout, it can be achieved with minimal time and cost. This does not compromise the safety and sturdiness of our system, which is second to none.

Unlike many of our competitors products, our shelves do not require mechanical fixing, but rest securely on custom designed brackets. Should you need to adjust the height or density of your shelving, this can be accomplished quickly, easily and with no tools.

A comprehensive range of accessories and display aids can be added to the system, and shelves can be used in various orientations to eliminate the need for additional display equipment. This can provide you with significant cost savings without compromising on the visual appeal of your library environment.

Key Features

- Modular Steel Construction
- Four Post and Cantilever Options Available
- 900mm Standard Bay Width
- 325/610mm Standard Depth
- Various height options to suit your requirements
- Shelves can be positioned at 25mm increments allowing complete display flexibility
- Complete array of shelf configurations available to display all required reading & entertainment material
- Various End Panels and dressings available in Timber, Perforated Steel or Glass





Timber Shelving Units

Our Modular timber library shelving system is manufactured from materials that have met strict sustainability checks.

Please note that shelves for the units must be ordered separately.



Metal Cantilever Shelving Units

Tailored to your specific requirements Unique is the ideal choice for book storage.



End Panels

Library End Panels are the signature of your library shelving collection with beautiful designs from full blown wood, laminate, steel and even plexiglass style end panels available.


Finishing off runs of shelving with designer end panels give your library a splash of added beauty that only ASA Members can sprinkle into your library design.

The Learning Journey™ Train

The Learning Journey™ from Unique Group is an innovative modular furniture solution that was designed in response to comments from the library market that there was a lack of innovative children's library furniture available. The solution we conceived was a range of equipment designed to both hold children's library materials and provide somewhere for them to sit and enjoy them.

The Learning Journey train is comprised of three distinct parts, the engine compartment, the seating carriage, and the kinder box carriage.



A photograph of a modern library interior. The space is bright and airy, with large windows at the top showing green foliage outside. The room is filled with white bookshelves on wheels, organized into aisles. Some shelves are labeled with categories like 'Society today', 'Romance', 'Large Print', 'Talking Books', and 'A-Z by Author'. In the center of the room, a bright green armchair sits on a dark grey carpet. A tall, narrow red and orange light fixture is visible in the background. The overall atmosphere is clean, organized, and inviting.

your very **Unique** Library



be assured...
be inspired...
be Unique





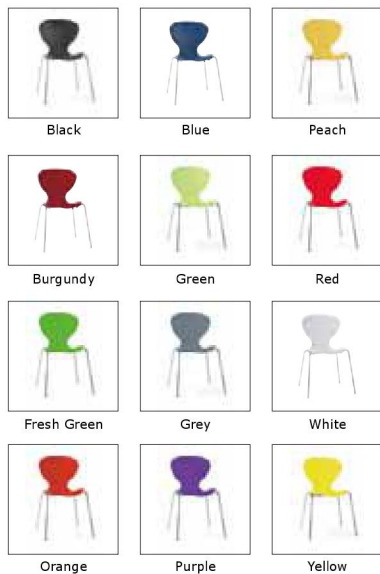
Affordable
innovation in
breakout furniture

FRÖVI



Mood

- Polypropylene and steel construction
- Choice of 10 vibrant colours
- High stacking capacity
- Durable ribbed back
- Available from stock



- Suitable for indoor or outdoor use
- Lightweight construction and easy stacking
- Non-corrosive aluminium legs
- Choice of 5 colours
- Available from stock
- Matches the Core stool



Core

- Suitable for indoor or outdoor use
- Non corrosive aluminium and polypropylene
- Designed to coordinate with the Hello chair
- Stackable, lightweight construction
- Available from stock



Green



Black



White



Red

Mello armchair

- Ultra comfortable contoured armchair
- Ideal for outdoor or indoor use
- Stackable up to 6 high for storage
- Extra thick frame – fibreglass-reinforced construction
- Tamper-resistant design – one-piece with no fixings



Green



Grey



Light Blue



Anthracite



Orange



White



Black



- Minimalist design with heavy-duty construction
- Impact-resistant edges and easy-clean surfaces
- Available in a choice of popular colours
- Optional upholstered seat pads
- Contrasting edge colours available



5
YEAR
WARRANTY



Block colours

Laminate colours



Edge colours (Standard or Premium)



Any combination of laminate and edge colours can be created.



Groovy Beech

- 11-layer veneered ply shell
- 22mm diameter tube frame
- 4-point frame fixing for strength
- Stackable with practical handhold slots
- Available from stock



- 11-layer veneered ply shell
- 22mm diameter tube frame
- 4-point frame fixing for strength
- Stackable with practical handhold slots
- Available from stock



Wedge Chrome

- Hard wearing table for busy environments
- 600 – 1200mm diameter tops
- Wide selection of materials and colours
- Bases designed for style and stability



Splash

- Suitable for indoor or outdoor use
- Fibreglass reinforced polypropylene structure
- Rain dispersing drainage slots
- EN strength tested and anti UV stabilised
- Available from stock



Anthracite

Blue

Green



Purple

Red

White



Wait

FRÖVI

- Fully upholstered with deep webbed seats
- Highly flexible with endless configurations
- Extensive selection of fabrics
- Two-tone upholstery option



Chill

- Spacesaving small footprint design
- Generous high back for comfort
- Durable laminated hardwood interior frame
- Extensive choice of fabrics



be assured... be inspired... be Unique

Telford segment

Mobile Segment tables are the perfect choice for adaptive work spaces. Compact but deceptively strong, available with either Fixed or Tilt-top for nesting.



Swing out

The frames are designed to swing together to reduce the overall footprint and save space when not needed. The resultant nest can be left in situ or moved flush against a wall.



Telford tilt top

Robust construction and a simple tilt facility. Fully mobile tables for reconfiguration, stored by a single operator. Available with a choice of Chrome, Silver or White end frames.



Doc

These circular tables with a crescent scoop can be used individually or docked against each other to form fluid configurations. The tables are supplied on fully welded steel frames with circular legs and have options for Mobile or Static units. 727mm high.



Plectra

This range of tables is offered with either a fully welded tubular steel frame or boxed-panel supports, ideal for adaptable work spaces. 727mm high.



Stand height

Continuous steel frame with 50mm diameter circular legs. Overall height 1100mm.



Take Up

Take Up is the ideal product for open plan areas where privacy is needed. The system can be added to with power, data, comms or 'PowerKiss' modules, making the system perfect for interactive or collaborative work.



Mobile Task

Contemporary seating with a choice of base styles for various applications.



Neos

Contemporary designed multi-functional chairs. NESB & NECB include Gas lift adjustment to allow reception or desk seating heights.



Adore

The latest exciting addition to our casual seating programme.



Egis

An inspirational range of laminated veneer seating combining style and durability.



Script

Rewriting the story of great furniture where sustainability matters.

Script embodies Gresham's commitment to true sustainability. Developed and manufactured in the UK, Script has been designed to be used, adapted and re-used providing longevity in the workplace.





**SUPPLYING
FURNITURE ON ALL LEVELS!**



Bobbin.

designed by Roger Webb Associates

Fun, fresh and practical. Bobbin chairs are design classics, brightening up your space. Available with dual upholstery and fixed or rotating base.



Connection

Bubble.

designed by David Fox

Scatter these small funky upholstered stools and tables around.



Cubix.

Useful little upholstered stools.



Gloss.

designed by David Fox

Striking and contemporary, Gloss is available on a choice of 3 bases. A range of tables completes the family.



David Fox

Award winning industrial and product design consultancy. Well balanced, innovatively detailed, simplistic forms give their work a timeless aesthetic.



Hive.

designed by Roger Webb Associates

Connection's stylish range of flexible modular furniture makes it easy to design dynamic spaces in a variety of environments.

Hive can seamlessly integrate the latest technology, including fixed and freestanding smart TVs and displays, power units and charging stations.

Hive.one

A variety of motivating work and learning environments can be created. Meeting pods have excellent acoustic properties, providing private spaces within open environments.



Hive.two

Fitting neatly against walls, Hive.two also fits brilliantly in open plan areas to create collaborative spaces.



Hive.three

Hive.three has a lighter design feel with simple, contemporary legs. All the Hive. range has the ability to create multiple configurations of differing heights and sizes to fit your space.



Hive. accessories

Power units, Integrated and free standing tables and stools in a choice of finishes help you add the final touches to your fully customised Hive units.



Horizon.

designed by Roger Webb Associates

Horizon is a modular seating system which allows multiple configurations. Able to be dual upholstered, it offers sleek, curved lines and is ideal for reception, social spaces or educational settings.



**Roger Webb
Associates**

Their name is synonymous with creating award winning solutions, going beyond design aesthetics and into designing how pieces are developed and manufactured.

Nook.

designed by Craig Jones Design

A stunning sofa with a compelling design aesthetic, available in two widths and a choice of high or low back and sides.



Craig Jones Design

London-based design practice committed to the development of high quality furniture design. They handle the process from conception through to production.



Kala.

designed by David Fox

Stylish contemporary designer chair promoting relaxation and comfort. Available as a high back or low back version with a choice of bases.

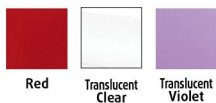


Frost.

A lightweight chair suitable for breakout or café, available in four colours. Stacks to 8 high.



Frost colours



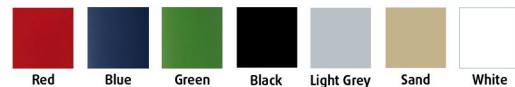
Accuracy of printed colours cannot be guaranteed. Please contact Customer Services for colour samples.

Ice.

Chrome 4 leg stacking café chair and bar stool, polypropylene and fibreglass dual coloured shell. Stacks to 6 high.



Ice colours

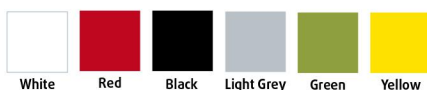


Retro.

These bright and cheerful chairs will bring a breath of fresh air to any café or breakout space.



Retro colours



Accuracy of printed colours cannot be guaranteed. Please contact Customer Services for colour samples.

Xpresso.one

Lightweight, stackable and strong, Xpresso.one has a polypropylene seat and back with a chrome steel frame.

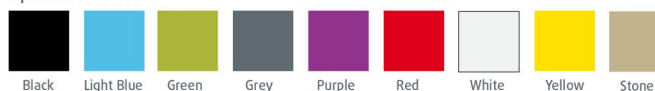
Available with or without black arms, the Xpresso.one chair can also be fully upholstered, or seat only upholstered in a fabric of your choice.

A range of accessories are available including linking strips (allowing the chairs to be attached in auditorium settings), writing tablets and stacking trolley. There is also a bar stool.

With so many options, there's sure to be an Xpresso that fits the bill!



Xpresso colours



Accuracy of printed colours cannot be guaranteed. Please contact Customer Services for colour samples.



Xpresso.two

Fabric mesh backed version of our popular stacking chair. Available with or without arms, plastic or upholstered seat. Mesh available in black or white.



Xpresso.three

Featuring a stylish perforated back, Xpresso.three is also stackable, available with or without arms and has the option of an upholstered seat.



My.

designed by Roger Webb Associates

The versatile My family of task and meeting chairs will enhance any work environment. Robust and practical, they have been designed to provide ergonomic support and comfort.



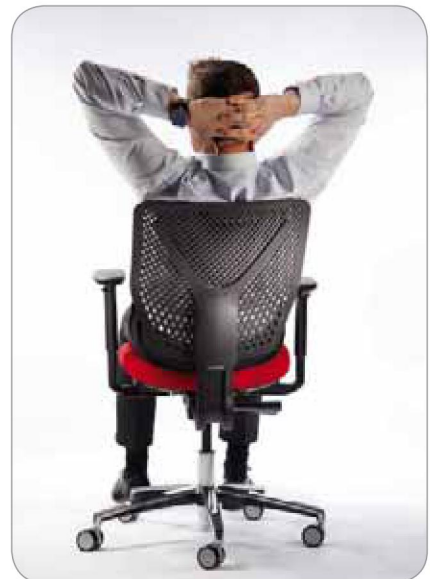
Why.

designed by Roger Webb Associates

Why is an easy to use task chair ergonomically designed to provide ultimate comfort to people of varying sizes and weights.



Why features a synchronised self tensioning mechanism and ergonomically designed flexible polymer back in black, white or grey.



My.

Folding meeting tables, available in a variety of sizes and finishes, designed to complement our meeting chairs.



Is.

Practical fixed top and folding meeting tables, available in a variety of sizes and finishes.





Vitra Limited

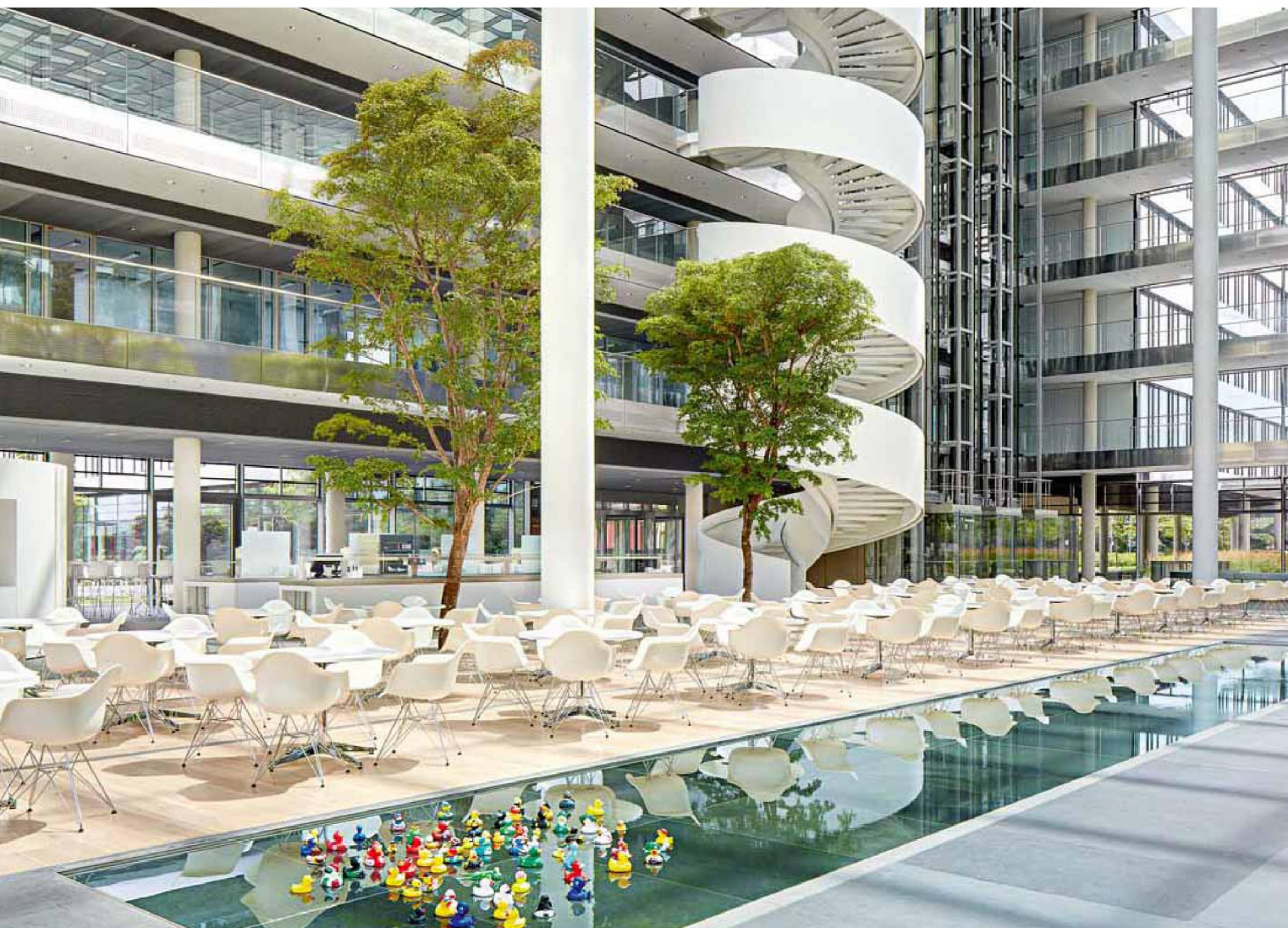
Vitra is a Swiss company dedicated to improving the quality of homes, offices and public spaces through the power of design. Our products and concepts are developed in an intensive design process, which brings together our engineering excellence with the creative genius of leading international designers. It is our goal to create interiors, furniture and accessories that are functional and inspiring. Longevity of materials, construction and aesthetics is our leading principle.

PLASTIC CHAIRS

Charles and Ray Eames, 1960

Vitra's Eames Plastic Side Chair is the authorised version of the legendary Fiberglass Chair. Originally designed for a furniture design competition for New York's Museum of Modern Art, it was the first industrially manufactured plastic chair and is an enduring design classic.





SIM CHAIR

Jasper Morrison, 1999

With SIM, Jasper Morrison has created the perfect expression of the chair type inaugurated by David Rowland's famed 40/4 chair in the 1960s. SIM is a combination of clear design, great sitting comfort and high quality, imbuing the chair with a subtle but special character.



TIP TON

Barber Osgerby, 2011

Tip Ton defines a whole new chair typology: the solid plastic chair with forward-tilt action. Tip Ton can be tilted at a nine-degree angle where it then stays in place. The forward-tilt sitting position, until now the preserve of mechanical office chairs, straightens the pelvis and spine and thus improves circulation to the abdominal and back muscles.



Classroom and training chairs

vitra.



MAP TABLE

Barber Osgerby, 2011

The modern strategy of shared learning through communication often requires tables to be rearranged: in small groupings for teamwork and workshops, in the round for discussions, and classic presentations require that the audience face the speaker. The Map Table is designed for all situations demanding flexible arrangements and the best usage of space.

HAL CHAIR

Jasper Morrison, 2011

With HAL, Jasper Morrison has created a reinterpretation of the multifunctional shell chair and a varied chair range with a distinctly contemporary appearance. The shape of HAL's shell ensures plenty of freedom of movement and the slightly flexible plastic makes many different sitting positions possible.



Training room tables and chairs



HAL TABLE

Jasper Morrison, 2011

The HAL Table was designed by Jasper Morrison to match the HAL chairs. The table can be fitted with either a round or a square table top. Depending on the intended use, various bases are available for these solid, stackable tables.





PANTON CHAIR

Verner Panton, 1960/1999

The Panton Chair is a furniture design classic. It was the very first single mould all plastic chair. Since its market launch, the Panton Chair has undergone several production phases.

PANTON JUNIOR

Verner Panton, 1959

The Panton Chair has always been a favourite of children. They not only like its bright, cheerful colours and smooth curves, but the fact that it is as much fun to play with as it is to sit on. Soon after its introduction, Verner Panton began to consider the idea of producing a child-size version of the chair together with Vitra.



Chair concepts

vitra.

ALCOVE SOFA

Erwan and Ronan Bouroullec, 2001

The central idea behind the Alcove Sofa is that a sofa can be much more than just a piece of furniture. This is especially true of the Alcove Highback Sofa, whose side and back panels reach an exceptional height.



EAMES ELEPHANT

Charles and Ray Eames, 1945



L'OISEAU

Erwan and Ronan Bouroullec, 2011



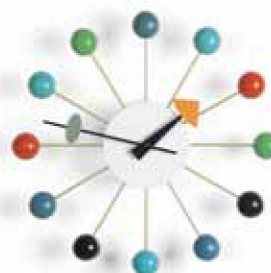
HOUSE BIRD

Charles and Ray Eames, 1960



NELSON CLOCKS

George Nelson, 1960



WOODEN DOLLS

Alexander Girard, 1963



Unique designer collection

Barber Osgerby Tip Ton Chair. Map Table



Edward Barber, born in Shrewsbury in 1969, and Jay Osgerby, born in Oxford in 1969; studied architecture and interior design together at the Royal College of Art in London. They founded their own architecture and design studio – Barber Osgerby – in 1996. Since then, they have worked together at the interface of industrial design, furniture design and architecture.



Charles and Ray Eames Eames Plastic Chairs



Charles & Ray Eames feature among the most important figures of twentieth century design. They boast accomplishments in the fields of furniture design, film-making, photography and exhibition design. Vitra is the only company authorised to manufacture their products for Europe and South Asia; with us, you can therefore be sure of owning an original Eames.



Jasper Morrison Sim Chair, HAL Chairs & Tables



Jasper Morrison was born in London in 1959 and studied design in London at the Kingston Polytechnic Design School and the Royal College of Art for post graduate studies. In 1986 he set up a design office in London. He has received numerous prizes and awards and his designs can be found in the collections of various museums throughout the world.



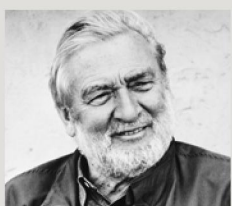
Erwan and Ronan Bouroullec Alcove Sofas



The brothers Ronan and Erwan Bouroullec live and work in Paris. Their field of work spans from small articles of daily use through to architecture projects. They have worked with Vitra since 2000 and have contributed numerous designs to both the office and home collections.



Verner Panton, Panton Chair



One of the most influential designers of the 1960s and '70s. Born in Denmark, Panton relocated to Switzerland in the early 1960s. He became known for his original and imaginative designs in the fields of furniture, lighting and textiles. Installations such as the legendary 'Visiona' exhibition demonstrated Panton's masterful use of colour, which is a hallmark of his work.



Perimeter

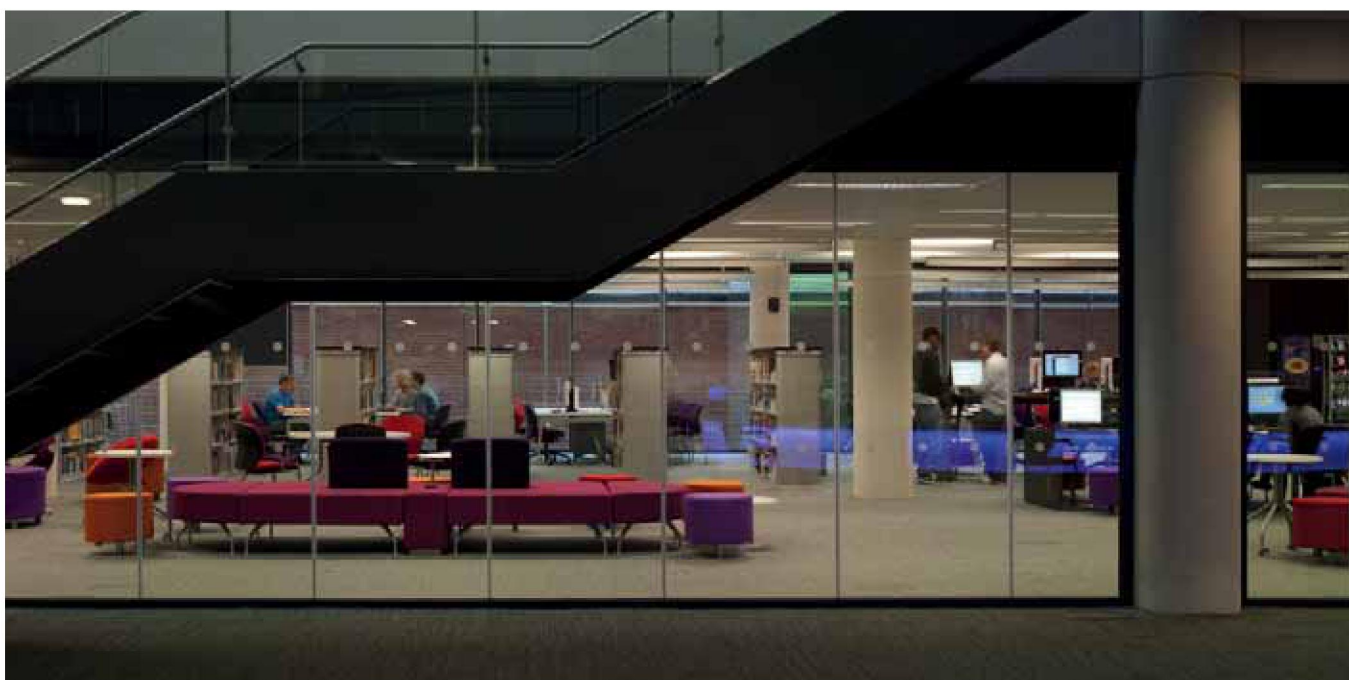


The Perimeter family ranges from a contemporary two seater sofa to a suite of pieces that can be configured successfully in both confined spaces and vast atriums.



Curved Perimeter - PR-31 HB

Boundary



Boundary offers a modular upholstery system where simple, smart components can be used individually or linked, to provide whatever scenario you need.



Boundary - 5 Piece Configuration

Airea



Airea meeting pods complement the Orangebox office landscape by providing the opportunity to divide open spaces and create closed or partially closed rooms.



AIREA-160

Cors

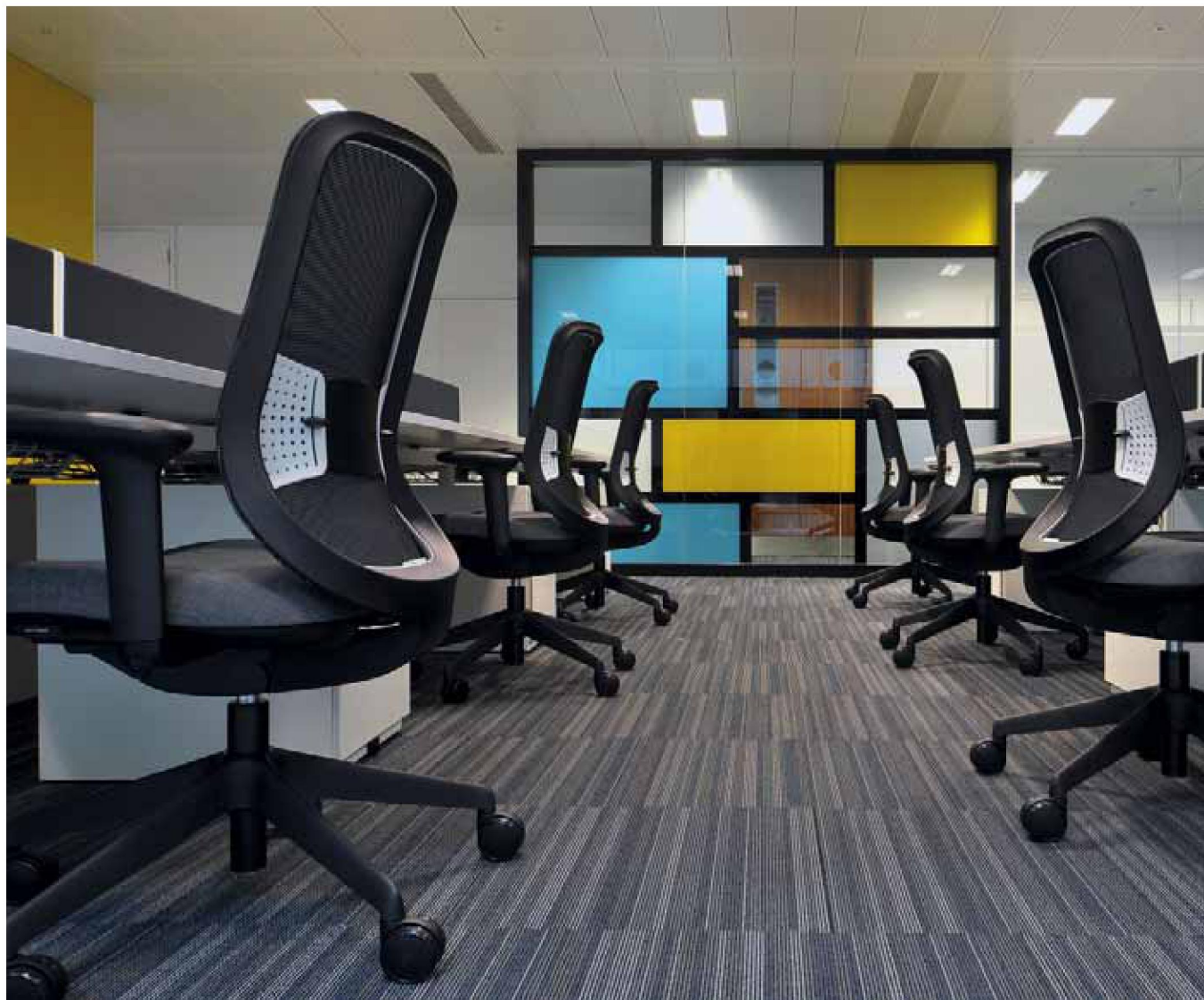


Cors is a robust, high stacking universal chair for use in either small groups, or within dense function scenarios.



CORS-WS & CORS-US

Do



Do is a chair with real invention; in the materials we've used, in the way it is assembled and transported, and in the performance it delivers.



DO-HBA

Joy



Joy displays the technical attributes of more expensive products, in a surprisingly affordable package.



JOY-12

Tarn & Dean



Tarn is a comfortable, supportive tub chair which combines beautifully with Dean and Point. Specification options of glides or castors answer a diversity of functional needs.



Dean is a companion product to Tarn. Dean's form is pared down to a real simplicity, without sacrificing support and comfort.



DEAN-02



TARN-01 (Writing Tablet)

Border & Tide



Border is an innovative new product that enables small cafe areas to be created easily, anywhere within an office building.

Tide's contoured ply or upholstered seat is balanced on a thin metal structural frame which achieves a design of refinement and clarity.



TIDE-04



BORDER-05



Point, Bligh & Fletcher



Bligh & Fletcher are light and manoeuvrable upholstered stools. Ideal for use in breakout areas and interactive learning spaces.



Point is the simplest of all Orangebox upholstered products and perhaps the most usable. It works harmoniously with contemporary products.



BLIGH-01 & FLETCHER-01



POINT-S & POINT T

Newton



The aim has been to achieve 'best in class' with a product that will help to provide a healthy, comfortable and creative learning environment.



NEWTON J-NR

MONITOR SUPPORTS



flo™



NEW

- Arm reach: 515mm (20.6")
- Vertical adjustment: 341mm (13.4")
- Monitor head: 40° upward tilt, -40° downward tilt
- VESA 75 and 100 compliant
- 180° stop function / 360° capability
- Made of 54% recycled material with 99% of Flo comprised of reusable material
- Available in white and silver
- Fixing options: desk clamp, through desk and slatwall

Giselle.



- Dynamic height adjustable monitor arm powered by gas strut for improved flexibility
- Suitable for hot-desking environments due to easy screen adjustment
- Mounts to walls, slatwalls, and desks using a variety of fixing options
- Quick release as standard – the screen can be removed in seconds
- Cable management facility
- Easy to install

Wishbone Plus.

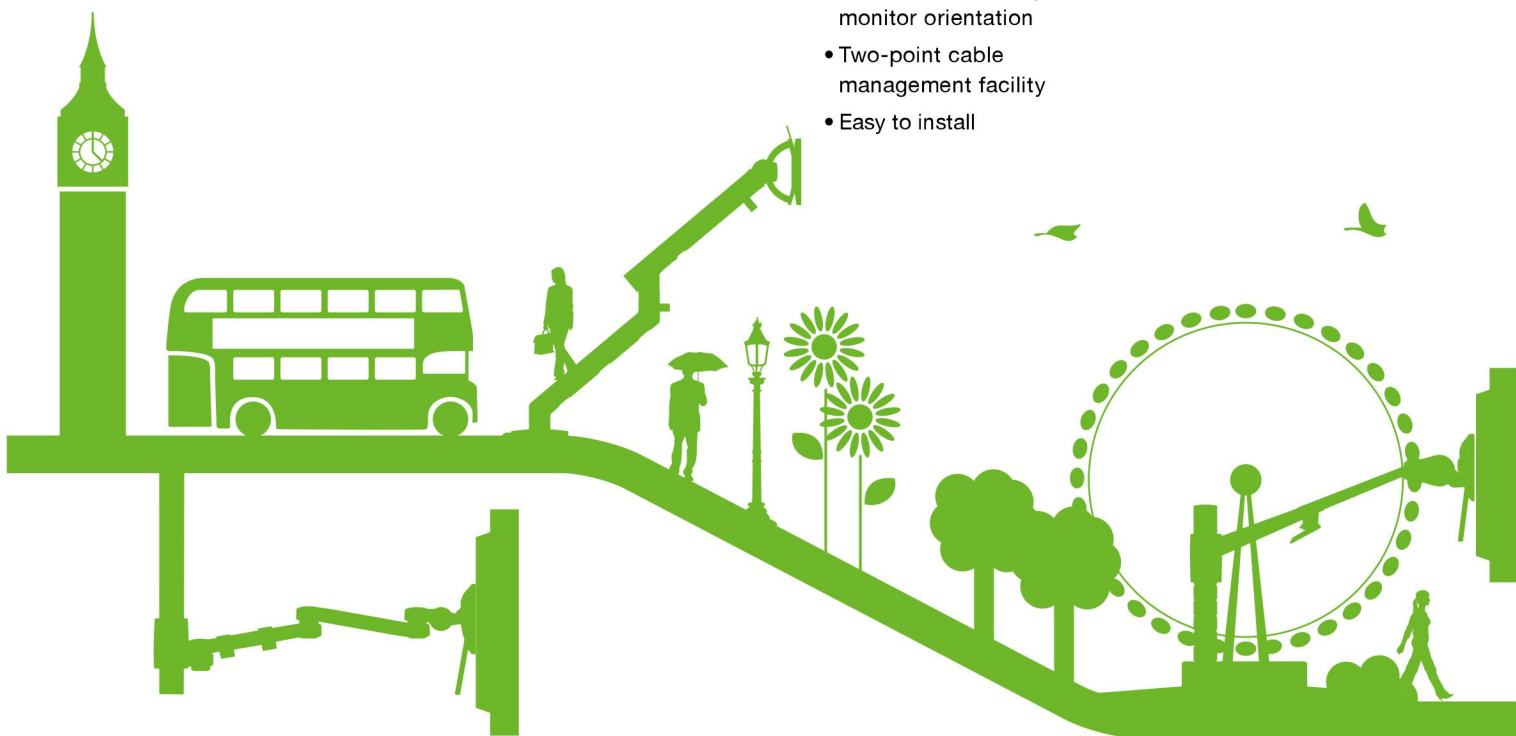


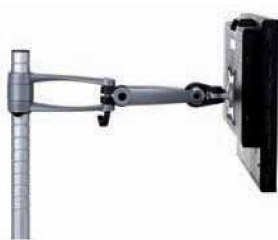
- A modern take on the original flat screen monitor arm
- Can support a weight of 24kg (52.8lb), enough to support screens up to 37"
- Ideal for future-proofing your business
- Suited to multi-screen environments
- Quick-release monitor head with optional security feature
- Built-in fine height adjustment feature to align adjacent monitors
- Portrait-to-landscape monitor orientation
- Two-point cable management facility
- Easy to install

Wishbone



- The original and classic flat screen monitor arm
- Suited to multi-screen environments
- System arm available in three lengths
- Flexible arrangements due to wishbone post system
- Quick release as standard – the screen can be removed in seconds
- Cable management facility
- Easy to install





- Height adjustable monitor arm powered by a spring clutch mechanism
- Mounts to walls, slatwalls, and desks using a variety of fixing options
- Increased flexibility of the classic design to provide easy manual height adjustment
- Cable management facility
- Easy to install

ZORRO



- The 'architect's' monitor arm, Zorro is loved for its ability to create clear space and less visual clutter
- The post sits lower than the screen to create clean straight lines
- The arm can be pushed flush onto itself, creating maximum space and saving space accordingly
- Ideal for rows of screens
- Mounts to walls, slatwalls, and desks using a variety of fixing options
- Quick release as standard – the screen can be removed in seconds
- Cable management facility
- Easy to install

daisyone.



- System monitor arm available in three different lengths
- Suitable for multi-screen environments
- Up to four arms can be easily mounted on one post without additional brackets
- Mounts to walls, slatwalls, and desks using a variety of fixing options
- Quick release as standard – the screen can be removed in seconds
- Allows the monitor to be positioned in either landscape or portrait format
- Cable management facility
- Easy to install

rodney



- 'All-in-one-box' monitor arm for simplified installation and usage (includes arm, monitor mount and desk clamp)
- Simple and innovative design – winner of 2009 Red Dot Design Award
- Full ergonomic range of articulation and height adjustability
- Can also be mounted into desk grommet hole

MONITOR ARM PRODUCT BENEFITS

- Lifts screen to correct height for each user
- Enables adjustment of height for multiple users of one workstation
- Enables adjustment of screen to avoid glare
- Saves space on the desk
- Easy to retro-fit to any existing furniture: desk clamp, through desk fixing, slatwall or toolbar mounted
- Integrated cable management
- Screen format can be easily switched between landscape and portrait



CPU SUPPORTS



Clam



- Theft deterrent lock makes Clam ideal for public spaces where security is an issue
- Made from high quality aluminium for durability and strength
- Can be mounted vertically or horizontally according to preferred configuration
- Mounts directly to desk underside
- Easily adjustable to fit specific CPU size
- Using a slide and rotate kit it can be easily moved back and forth under the desk for increased leg space

JAW



- Design of JAW allows the CPU to 'float' under the desk for improved aesthetics
- Made from high quality aluminium for durability and strength
- Using a slide and rotate kit it can be easily moved back and forth under the desk for increased leg space

LOOP



- Compact in size for easy shipping and storage
- CPU is supported by a webbing strap and is easily tightened by a ratchet mechanism
- Made from precision engineered plastic
- Using a slide and rotate kit it can be easily moved back and forth under the desk for increased leg space

ADDB



- Strong tubular steel structure
- Mounts directly to the underside of the desk
- Using a slide and rotate kit it can be easily moved back and forth under the desk for increased leg space

ADDB/M



- Adjustable mobile CPU trolley on robust castors
- Manufactured in epoxy polyester coated tubular steel

CPU SUPPORT PRODUCT BENEFITS

- Allows CPU to be placed out of the way under the work area, freeing up space
- Protects the CPU
- Prevents trip hazards
- Creates easier cable and port access
- Front and back of CPU can be easily accessed facilitating maintenance and hardware upgrades
- Makes offices easier to clean and prevents CPU being knocked by vacuum cleaner
- Improves ventilation
- Works as an anti-theft deterrent

Market leading ergonomic solutions to meet your technology challenges

flo



flo

FLO SINGLE
Flo effortlessly combines sleek aesthetics with excellent functionality and outstanding environmental credentials



flo

FLO DUAL
Use two Flo arms with a single desk clamp to support a screen alongside a tablet or laptop, or dual screens if you prefer



flo+

FLO PLUS DUAL
Support dual monitors to a weight of 18kg in either flat-screen or cockpit configuration

The Flo Family



flo

FLO WITH TABLET MOUNT



flo

FLO WITH LAPTOP MOUNT



flo+

FLO PLUS SINGLE
Support large single screens to a weight of 18kg



“Excellent manoeuvrability and stability make Flo a truly ergonomic monitor arm. Ingenious design enables it to double up as an effective touch-screen support.”

- Levant Caglar



reddot design award
winner 2011



SILVER



WINNER
2012



UNPARALLELED STUDENT SUPPORT



Making Technology Work

About Us

For over a decade now, UNS' sole purpose as a company is becoming the best IT Services Provider in the region. We offer unparalleled Customer Service by primarily establishing and understanding our customers' organisational needs. Armed with which, we then utilise our time-honored relationships with our multiple Vendor Partners to deliver our schools, colleges, academies and universities the IDEAL solution.

Rest Assured

You're in safe hands, recently we tallied up how many years experience our company can offer, the results were quite astonishing with an amazing 100 years combined experience throughout our team of Consultants and Engineers. What's more all of our Engineers are Microsoft qualified and empowered to continuously develop their IT expertise meaning our Educational clients benefit from tapping into this knowledge base and relish in the fact their Networks are kept up to date and they don't make any costly mistakes of going it alone..... the results; our clients stay with us... over 85% of the clients signed in our first year of business are still renewing their contracts year on year a decade on....



Unique Education

Does your school require Curricular Network Support?

Are you tied to tight budgets and limited resources but need to ensure the students don't miss out?











With Technology moving at a fast pace it's important that Education embrace the changes necessary to prepare students for what lies ahead. This means that Educational IT Networks are rapidly becoming more complex and supporting schools and colleges IT on an ad-hoc basis is no longer sustainable and therefore more and more are recognising the need for Professional IT Support Solutions within the Educational Sector.

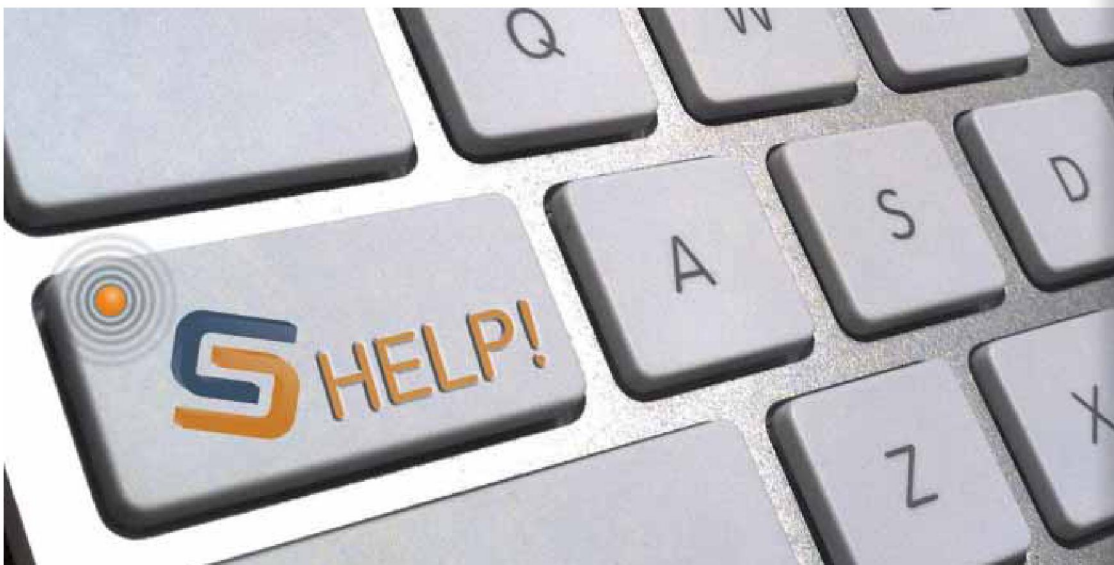
With our portfolio of clients across the age range from Primary through to Universities we are adept in the Education sector.

Unique Network Solutions understand the financial pressures and limitations that Head Teachers and Higher Education Principals face and with our Directors being active school Governors they appreciate the problems that inevitably arise....

That's why we created our IT Education Package called *Unique Education*

Package covers:

-  **ICT Support for Schools, with UNLIMITED support onsite & UNLIMITED remote/phone support with guaranteed and agreed SLA in place.**
-  **Supplement your existing ICT resource.**
-  **Supporting all hardware including PC's, Printers, Copiers, Laptops, Servers, Phone Systems.**
-  **24/7 monitoring.**
-  **VDI Experts.**
-  **Interactive whiteboards for Education.**
-  **ICT hardware & software for Education environment.**
-  **Microsoft Certified Engineers with current CRB certificates.**
-  **Regular on-site presence as agreed with you, visits can be scheduled weekly, fortnightly or monthly basis OR full-time if required..**
-  **Wireless Network Experts.**



'UNS has helped us get control of our system back. We now have less downtime, fewer issues and peace of mind that our ICT is running as it should be.'

**Brandon Lewis -
Director,
Woodlands
Schools Ltd.**

SAVE THOUSANDS ON YOUR PC's

"UNS listened to our vision and have worked tirelessly with us to give us the ideal ICT solution to take our school forward into the twenty first century. UNS really care and our children and staff are reaping the rewards already."

*Head of Brady
Primary School.*



Save thousands on your PC's

Do you recognise these problems?

- **High PC maintenance costs** – REDUCE THEM with VDI centralising and simplifying desktop management, such as updating Anti-Virus & Security packages and rolling out new versions of applications. PLUS students are provided with a 'brand new' desktop at each logon, drastically reducing maintenance efforts and cutting storage costs by up to 90%!
 - **High refresh costs** – With lower power consumptions, longer hardware lifecycles, VDI brings vastly improved Return On Investments.
 - **Isn't VDI complex to deploy?** – VDI is EASY to deploy on simple commodity servers. The ALL-IN-ONE design eliminates the need for other services and devices, such as expensive Storage.
 - **Can I use my existing Operating System?** – Being compatible with a choice of hypervisors there's NO vendor lock in for virtualisation of user devices. Students can access their desktop from most common clients, including Windows, Mac, OS and Linux.
 - **Can it support 100's of users?** – With VDI we scale on demand. AVOID paying high upfront costs and over provisioning. Grow as and when you need to, from 20 to 2000 users and beyond....
- UNS recognise that schools, academies, colleges and universities all over the country face tight resource and budget constraints as well as the roundabout of PC Management – couple this with the demand of keeping up to date with the fast pace of technology and priming students for the workplace....it can be a real nightmare!!!
- We completely empathise with this, and have worked hard to find solutions to enable ANY educational facility to benefit from virtualising their desktops.
- Being partnered with the leading Virtualisation Vendors, VMware and Citrix, we're skilled in delivering Virtual Desktop Implementation to the Education Sector.

ASK ABOUT OUR PROOF OF CONCEPT - TRY IT BEFORE YOU BUT IT

Do you want to offer your students a FAST, SECURE WIFI connection anywhere on site.....?

Are you a multi-site school or college needing WAN coverage for all your staff and students?

Are you spending valuable time and budget trying to manage your wireless network?

High-speed, secure networking has evolved beyond the Local Area Network to Wide Area Networks, the Internet, Smartphones, PDA's and beyond and more than ever everyone wants instant, secure and reliable connections. UNS specialise in wireless networks solutions and as part of Unique Education can deliver cost effective solutions to schools, academies, colleges and universities across London, Essex and the South East. What's more we'll take complete care of it (if you want us to) with our Fully Managed WIFI solutions package.

- Restrict internet access on a user or group level.
- Setup dedicated networks with various permission levels for students, staff and guests.
- Monitor with our reporting function so your ICT staff can clearly see what devices are connecting and what is being used.
- High level of network security delivering FAST & EASY access to your networks.

Does it matter how large or small we are?

Our wireless solutions are fully scalable to the demands of your Educational Facility. With our future-proof wireless technology you can expand the size of your network at minimal cost with zero downtime.

Budget Constraints?

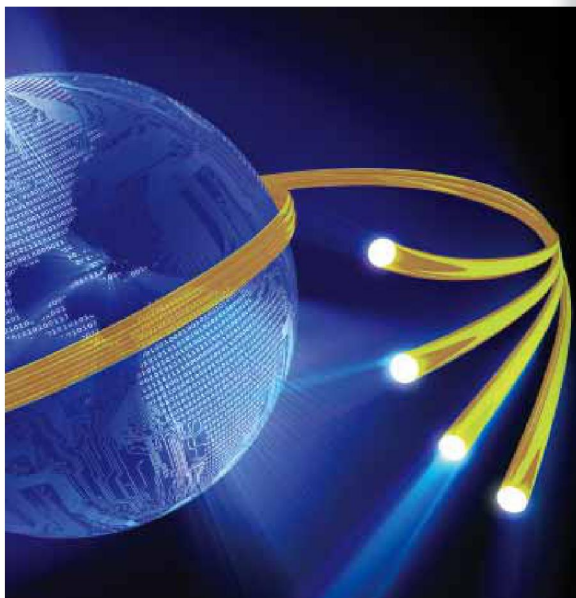
Implementing a wireless solution on campus doesn't have to be expensive. Firstly our Engineers conduct a fully detailed site survey before any quotations are produced, allowing us to create a blueprint for a wireless network which is then tailored to both your infrastructure, and your budget.

With Unique WIFI there's no need for expensive on site wireless controllers and associated maintenance/warranty hardware costs. Everything is automated and it can be set up in a matter of minutes...

Need a RELIABLE & FAST Broadband Connection?

Unique Bluesky is our Super-Fast Wireless Broadband, being independent from BT or any other cable based operator your distance and location from the nearest exchange is irrelevant - no matter where you are - we'll get you connected! There's a choice of speeds to suit your requirements and budget and all for a fixed monthly fee.

So let your students harness the benefits Unique Wireless Solutions offers EDUCATION...



COMPLETE EDUCATION SOLUTIONS

1. HOSTED CLOUD SOLUTIONS
2. MOBILE TECHNOLOGY SOLUTIONS
3. HARDWARE
4. THIN CLIENT AND VIRTUAL DESKTOP SOLUTIONS
5. INTERACTIVE WHITEBOARD SOLUTIONS



Microsoft
Authorized Education Reseller





Save Money
with Unique Educational Discounts as well as the cost savings from having a Fixed Price Support Package.

Increase Network Stability
enabling Staff & Students to fulfil Curricular requirements.

Instant Access to IT Professionals & expert advice.

Minimise class disruption
due to network failures.

Case Studies: Parks

Triple T Play Park

Project: Triple T Play Park, Truro Playbuilder

Date: November 2010

Brief: The concept of the playbuilder project was to create a space that would unite and entertain a wide variety of age groups in the most organic way possible. By using existing landforms and utilising the natural holistic layout we have successfully impacted on the community, reducing levels of vandalism and increasing social interaction with an all accessible and well thought out play area.



In progress pictures



Design elevation



Photo before

Harrowbarrow & Metherell Woodlands Park & Play Area



Photo after: Junior Play Area



Photo after: Infant Play Area



Photo before: Junior Play Area



Photo before: Infant Play Area

Project: Harrowbarrow & Metherell Woodlands Park & Play Area

Date: March 2010

Brief: The idea at Harrowbarrow was to be sympathetic to the rural location but provide the village with a much needed adventure play area for juniors through to teenagers, including high level platforms, zip wires and extensive physical play opportunities. The infant area was produced to allow the same thrills for younger participants to enjoy; incorporating simple towers, swings and play trail elements with the same emphasis on natural materials.

...Be Outdoor

Case Studies: Schools

Belgrave Primary School

Project: Belgrave Primary School

Date: September 2009

Brief: The idea at Belgrave is a vibrant and interactive learning space, converting a disused and once perceived unusable space into an interactive and tactile habitat for young learners. There is a bounty of sensory learning with musical instruments and a strong use of natural themes. Although some synthetic products have been used our aim was to keep everything natural, lasting and constantly useable all year round.



Photo before



Photos after

Stoughton Infants School

Project: Stoughton Infants School

Date: April 2010

Brief: The design brief at Stoughton was to create a physical and imaginative play area out of an unused grass and tarmac area. The plan involved three zones: the main front area complete with a new rubber crumb surface, the play trail utilising landforms and an existing tree, and area three which comprised of a story telling area with a carved dragon seat.



Photo before



Photos after

Safety Surfacing

Wetpour Rubber (8401)



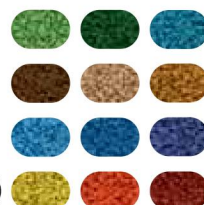
The Schoolscapes range of Safety Surfacing ensures that your play equipment installation complies the safety requirements of BS/EN1177. It can also enhance the Play Value of any outdoor space, enabling children to play outside in a clean, safe environment.

Wetpour Rubber is a safe and fun way to finish a playground. It is mixed on site and laid as a continuous surface. Colourful shapes, games and themes can be integrated into the surface to create bold, exciting space. It is suitable for any 'Critical Fall' Height up to 3m, the depth of surfacing required increases with the fall height.

Features:

- Impact absorption
- Porous
- Non slip
- Aesthetically pleasing
- Enhanced play value
- Low maintenance

Colour choices:



Materials: EPDM rubber granulate bound in polyurethane resin.

Assembly: Professional installation required

Resin Bound Rubber Bark (8502)



Resin Bound Rubber Bark is a colourful surfacing made from 100% recycled tyre buffings. It has the appearance of bark, but the lifespan of rubber surfaces, making it long lasting, cost effective and green. It is an attractive, versatile and almost maintenance free solution to a wide variety of applications. It can be laid to different thicknesses to cover a range of critical fall heights.

Features:

- No need for foundations, or specific ground preparation
- No need for heavy equipment on site
- Single layer coverage
- Retains no moisture and does not stay wet
- Mixed colour/ pattern options
- Natural looking aesthetic

Colour choices:



Materials: Recycled car tyres, resin, organic pigment to colour

Assembly: Professional installation required

Cellular Rubber Matting (8501)



Cellular Rubber Matting is an easily installed, environmentally friendly, non-slip safety matting. It absorbs impact, shock and noise. It is a moulded non-slip cellular structure with excellent durability.

Features:

- Impact absorption
- Environmentally friendly
- Can be used on flat or contoured landscapes
- Non-slip surface with excellent durability
- Can be combined with Ground Stabilising Mesh where ground is unstable or boggy
- Allows water to drain through
- Wheelchair and pushchair accessible
- No costly base works
- Requires no special skills or tools allowing for quick and easy installation
- Prevents erosion to grass

Materials: Moulded, non-slip cellular rubber

Assembly: Assembly & groundworks required

...Be Outdoor

Weatherproof Shade Sails



Overlapping Triangle Shade Sail (5201)

Our Weatherproof Shade Sails are constructed from a specially developed, heavy duty material which provides up to 99% protection from harmful UV rays and reduce the temperature in the shaded area by up to 32%. The Weatherproof range is shower-proof, able to withstand winds of up to 110mph and a snow loading of 22kg per m², as well as meeting local council and H&S specifications.

Weatherproof Shade Sails can be arranged in many different ways to create light and airy spaces beneath. They can easily be extended over time to suit your needs and budgets. The sails are available in over 20 different vibrant colours, are easy to clean and resistant to mould and mildew.

For bespoke configurations please contact us to discuss your needs.

Materials: Galvanised steel posts
Assembly: Professional installation included
Optional padded post protectors and anti-climb cones available.

Hyperbolic Square Shade Sail (5206)



The Hyperbolic Square Shade Sails provide effective shading and form a barrier against harmful UV rays. They are made from a porous material which prevents temperature build up underneath.

They are available in 5m to 8m and combinations can be designed to cover large areas with a minimum amount of posts.

Padded post protectors are available in four different colours as an additional item.



Dimensions available: 5m x 5m
6m x 6m, 7m x 7m, 8m x 8m

Triangle Shade Sail (5202)



The Triangle Shade Sails, much like the Hyperbolic Square Shade Sails, also provide effective shading and form a barrier against harmful UV rays.

They are available in 6m to 9m and combinations can be designed to cover large areas with a minimum amount of posts or to overlap to create a design feature.

Padded post protectors are available in four different colours as an additional item.



Dimensions available:
6m x 6m x 6m,
7m x 7m x 7m, 8m x 8m x 8m,
9m x 9m x 9m

Uniquely green *credentials...*

It is the policy of the Unique Group to reduce its environmental impact, where practicable. Carbon reducing measures form an integral part of the overall Company strategy, helping to improve both operational performance and a reduction in potentially harmful emissions to land, water and air.

The company's ultimate aim is for a 0% carbon balance to be achieved within the next 5 years where practical.

Having achieved the Quality Standard ISO 9001 Certification in 2008, the Environmental Standard ISO 14001 in 2010 and Health & Safety Standard ISO 18001 in 2013 Unique endeavour to have the highest levels of service possible.

"This is the result of a great deal of hard work on the part of our management team, their dedication to staff training and the continued evolution of our policies and practices" said Managing Director Tony Copping in an interview in May this year.

Working towards BREEAM® sustainability.

BREEAM® Offices is the world's most widely used means of reviewing and improving the environmental performance of office buildings. Assessments can be carried out on both new and existing office buildings – empty or occupied.



our world is unique, let's protect it.

THE QUESTIONS ARE EASY...

1. WHO DO YOU CALL IF YOUR SCHOOL, ACADEMY, COLLEGE OR UNIVERSITY NEEDS NEW FURNITURE?
2. WHEN PLANNING YOUR CLASSROOMS OR NEED A LITTLE BIT OF HELP WITH DESIGN, WHO ARE THE PEOPLE TO HELP?
3. WHO CAN YOU RELY ON TO SUPPLY HIGH QUALITY, DYNAMIC, MODERN AND CONTEMPORARY FURNITURE THAT FITS WITHIN YOUR BUDGET?

THE ANSWERS ARE ALL **UNIQUE!**



Over the years Unique Education has expanded its services and products offering to include:

- Furniture for the Commercial and A&D markets
- Care Home & Retirement Furniture
- Display Screen Equipment & Workstation Assessments (Access to Work)
- Public Sector & Local Authority
- Relocation & Move Management

How can you buy from us?

Direct with an official purchase order.

Via your Governing body purchase order.

Via local framework agreements such as the LCSG.

Via National framework agreements such as ESOP, CPC and SUPC in conjunction with specific allied manufacturers.



call us on **020 8500 2121** or click www.unique-group.co.uk or email: sales@unique-group.co.uk



UNIQUE

The Unique Guide to Education Furniture

Unique Office Solutions Ltd
56-58 Peregrine Road, Hainault, Ilford, Essex, IG6 3SZ

TELEPHONE: 020 8500 2121 FAX: 020 8500 2266
EMAIL: sales@unique-group.co.uk

www.unique-group.co.uk

